


Argyle  
VILLAGE





A man and a woman are smiling and eating pizza in a restaurant. The man is wearing a blue blazer and a patterned shirt, and the woman is wearing a light blue shirt. They are sitting at a table with several pizzas. The background is a blurred restaurant interior with warm lighting.

IN THE  
SPIRIT  
OF THE  
GOOD  
LIFE

## SPIRITED, VIBRANT, YOUTHFUL

### Welcome to Argyle Village

*Argyle Village is a masterfully-designed community of beautiful stacked and rear lane towns, centrally located in Guelph, with easy access to transit and an abundance of amenities. It's a thriving community and a captivating neighbourhood to call home. And like all Reid's Heritage Homes built over the last 45 years, your home will be built with quality, care and craftsmanship.*

*Feel the buzz!*



# A TIMELESS HOME WITH YOUTHFUL SPIRIT

## Your stylish life

*Welcome to a world where modern designs seamlessly blend with the art of living. Nestled in the heart of Guelph, residences offer exquisite floorplans, catering to open concept living boasting dreamy kitchens and expansive windows, redefining the boundaries of beauty and functionality. Experience a life where every detail is meticulously designed to elevate your living experience. Where your home becomes the embodiment of contemporary luxury.*

## Feel at home!





## ELEVATED BEAUTY

Welcome home to luxury

*Thoughtfully designed spaces and a meticulously crafted layout promote a sense of well-being and balance. Whether you're entertaining guests or relaxing after a long day, come home to a place where you can fully immerse yourself in the art of living and embrace a lifestyle that is both luxurious and fulfilling.*

Feel the energy!









## MODERN ELEGANCE

Welcome home to style

Bright, spacious, welcoming and extremely stylish. Your home at Argyle Village will impress with every detail - from the timeless finishes, to the breathtaking views, to perfectly-planned kitchens and spacious floorplans. It's a home you'll be proud to share with others.

Feel the energy!





# WV

IN THE  
SPIRIT OF  
EXCITING  
LIVING

## ARTFUL LIVING IN GUELPH

*Discover the magic*

*Want to be right in the heart of a vibrant city? Steps away from Argyle Village are all of the modern conveniences you have come to expect, including well-known pharmacies, restaurants, coffee shops, and fitness centres. Outdoor spaces like Orin Reid Park Playground, Gosling Gardens Park and Westminster Woods Trail bring the community together and provide a wonderful respite from the daily hustle.*

*Historic downtown Guelph is centrally located and only a short drive from Argyle Village. You'll also find numerous restaurants, grocery stores, one-of-a-kind boutiques, cafés, and professional services for all of your family's needs. Events happen all-year long and bring the city together.*

*Guelph has the best of both worlds - city conveniences and small-town charm. Your life in the city will be spirited, vibrant, connected and rewarding.*

*Feel the excitement!*



# LIVING THE GOOD LIFE

## IN GUELPH

*Big city amenities, delicious eating, fun living... welcome to an incredible place to call home. Argyle Village in Guelph is steps to the best culture, nightlife, opportunities, restaurants, galleries, shopping and a major university. It's a stunning neighbourhood set in thriving area.*

**Feel the fun!**



SPIRITED,  
VIBRANT,  
EASY LIVING  
AT ITS BEST.

### SHOPPING

Everyone loves grabbing a delicious treat from Balzac's on a Saturday morning and heading out to do a little shopping, and here in Guelph you are in luck. At Argyle Village, you're surrounded by countless shopping options, including the city's charming downtown filled with unique shops and independent stores like Rug and Weave and the eclectic On The Verge.

### DELICIOUS DINING

Enjoy the countless dining establishments within walking distance from Argyle Village such as Borealis Grille and Bar, or Boathouse - a locally sourced tearoom and ice cream parlour located just off the Speed River. Visit Downtown Guelph, with patios that line the streets. You'll find bakeries, cafés, butchers, food specialty stores, and so much more.

### FUN ACTIVITIES

Outdoor adventure in the city begins at Harlon Creek Park and South End Community Park for the splash pads, and continues at Lyon Leisure Pool for outdoor swimming. For your four-legged friends, the south end of Guelph is home to the area's biggest leash-free dog park. The City runs various city libraries and recreation centres that offer swimming, skating, and more. Golfing in and around Guelph is a dream, with options including Victoria Park Valley Golf Course and Turtle Creek Golf Club, to name just a few. Don't miss the Hillside Festival, a not-for-profit music and artistic expression festival, attended by thousands annually.

### TIME TO EXPLORE

We love Preservation Park! Home to hiking trails and expansive boardwalks in the middle of the city, with an entrance just a stone's throw away from Argyle Village. Discover the beauty of the Arboretum, which offers various nature trails through 400 acres of gardens, woodlands and meadows. Don't forget to discover Aberfoyle. Aberfoyle provides great day trip options like Starkey Hill Conservation Area and Fletcher Creek Ecological Preserve. Argyle Village is only ten minutes away from the 401 and 45 minutes to the airport, making it easy access for commuters and travelers of any kind.

### OPPORTUNITY & CULTURE

The University of Guelph is minutes away, providing excellent postsecondary education and job opportunities. It's also one of Guelph's largest employers. Conestoga College is a leader in polytechnic education and one of Ontario's fastest growing colleges. Both Wilfrid Laurier University and University of Waterloo are also within driving distance. Major industries in Guelph include advanced manufacturing, agriculture and food innovation, and environmental management and technology, as well as a plentiful creative scene.

Global manufacturing leader Linamar Corporation and other major corporations make Guelph their main hub, providing huge opportunities for advancement.

For art and museum lovers Guelph has much to offer. The Art Gallery of Guelph, The Garden House Art Gallery, Renann Isaacs Contemporary Art, the McCrae House, the Guelph Civic Museum, Locomotive 6167 and The Children's Art Factory. Home to the University of Guelph's School of the Arts, you'll discover art in and around the city everywhere.



# GUELPH CHARMS

WITH FABULOUS AMENITIES AND A COVETED LOCATION

## WELCOME TO DOWNTOWN

Guelph



## SOME DOWNTOWN FAVOURITES

### DINING

1. Atmosphere Cafe + Etc.
2. Baker Street Station
3. Buon Gusto Restaurant
4. Crafty Ramen
5. La Reina
6. Mijida
7. Royal Electric Bar

### SHOPPING

1. Grit & Grace
2. If Footwear
3. Kennedy Park
4. Lady Glaze Doughnuts
5. Lovely Co
6. Market Fresh
7. Play with Clay
8. Rug & Weave
9. Sunday General Store
10. The Patch

### ARTS & CULTURE

1. Gritt Gallery
2. Guelph Farmer's Market
3. The Bookshelf
4. The Children's Art Factory
5. Market Square

### COMMUNITY

1. Downtown Guelph Business Association
2. Guelph Central Station (Go Train)
3. Guelph Public Library

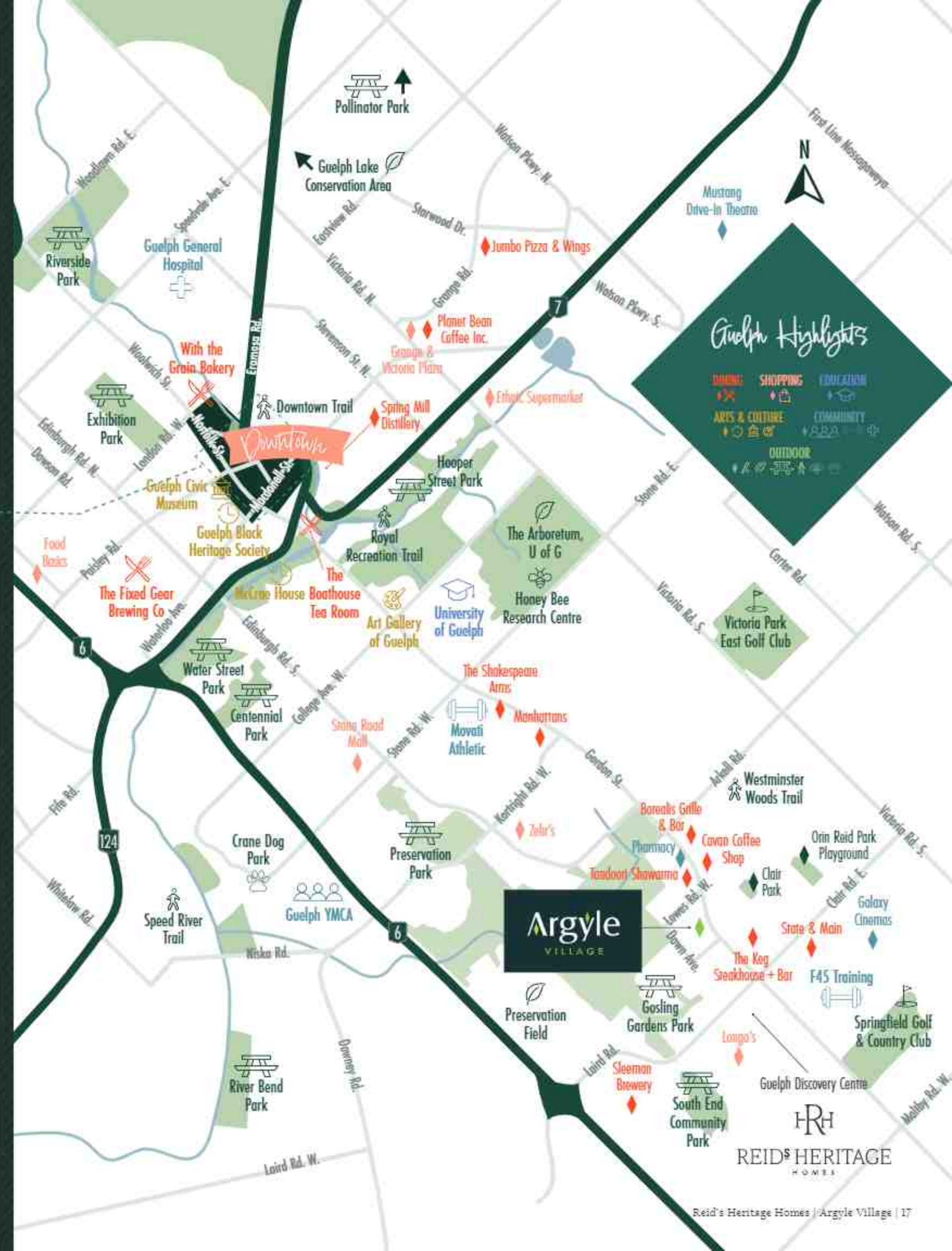
CHECK OUT THE APPROXIMATE DRIVE TIMES FROM ARGYLE VILLAGE TO THE FOLLOWING CITIES:

TORONTO  
1 HOUR

HAMILTON  
40 MIN

WATERLOO REGION  
25 MIN

MILTON  
25 MIN





# IN THE SPIRIT OF COMFORT

STACKED TOWNHOMES

## THE PERFECT PLAN

### Modern towns

*Our townhome floorplans have been expertly designed and make use of every inch of space to fully optimize your home's size. This means you can live large and easy in spaces that feel both cosy and spacious*

*Feel the comfort!*

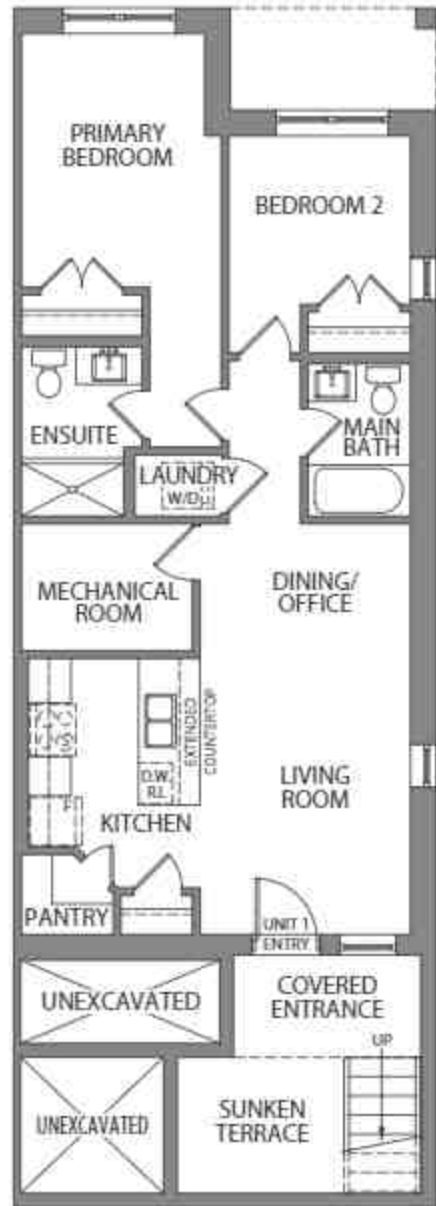
All drawings are artist's concepts only and may vary slightly from the final product. © 2023



UNIT 1

# THE CHELSEA

THE TERRACE SUITE | 900 SQ. FT.  
2 BED | 2 BATH



TERRACE LEVEL

UNIT 2

# THE MADISON

THE MAIN FLOOR SUITE | 780 SQ. FT.  
2 BED | 2 BATH



MAIN LEVEL

UNIT 3

# THE HUNTER

THE FRONT UPPER SUITE | 1,050 SQ. FT.  
2 BED | 2 BATH



MAIN LEVEL



SECOND LEVEL



THIRD LEVEL

All drawings are Artist's Conception only and may vary slightly from the final product. All floor plans are subject to change without notice. Actual square footage may vary from stated area, and square footage has been calculated based on available living space according to HUD's rules and does not include garage or basement areas (unless otherwise stated). More detailed information is set out in the Agreement of Purchase and Sale. Drawings may show optional features which may not be included in the base purchase price. Balconies and patios may be required as shares for planning and construction. Coverage does not include, but is not limited to, any and all applicable laws, regulations, codes, and standards. Plans and specifications are subject to reasonable modification, as necessary, at the discretion of the Builder, without notice. © 2017 RCH

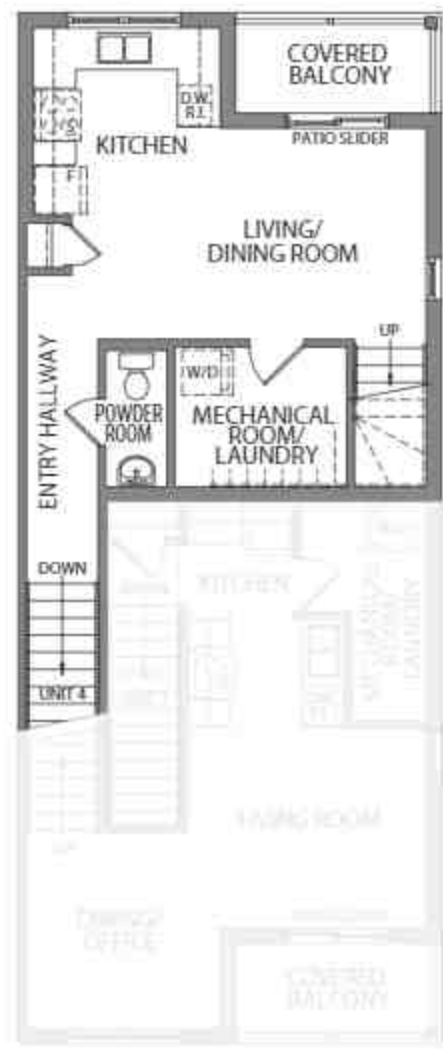


# THE KENNEDY

THE REAR SUITE | 980 SQ. FT.  
2 BED | 1.5 BATH



MAIN LEVEL



SECOND LEVEL



THIRD LEVEL

WINDOWS AT END UNITS ONLY

WINDOWS AT END UNITS ONLY



All drawings are Artist's Concepts only and may vary slightly from the final product. FLOOR: The floor-down may be the reverse of the home pictured. Actual usable floor space may vary from stated area, and square footage has been calculated based on usable living space according to HUD's rules and does not include garage or basement area unless otherwise stated. More detailed information is set out in the Agreement of Purchase and Sale. Downward may show optional features which may not be included in the base Package. Pans, Ballrooms, and bar sets may be required as shown for plumbing and electrical. Setup must then, if applicable, feature may vary subject to guide. In an ongoing effort to improve our homes and our community, changes may have been incorporated into our "New Home" vision and construction techniques. All plans and specifications are subject to reasonable modification, as necessary, at the discretion of the Vendor, without notice. © 2023/2024

All drawings are Artist's Concepts only and may vary slightly from the final product. FLOOR.



# IN THE SPIRIT OF COMFORT

REAR LANE GARAGE TOWNHOMES

## THE PERFECT PLAN

Rear lane garage townhomes

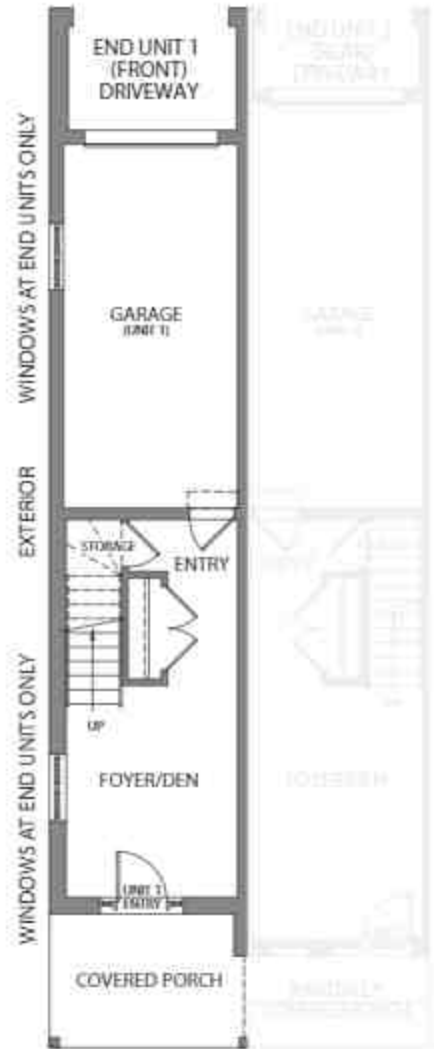
*Our Rear Lane Townhomes are loved by our homeowners, and it's no wonder when thoughtfully designed spaces are the norm. You'll discover open functional areas, modern kitchens, convenient rear access, garages, innovative floor plan options, and charming porches and balconies - it's smart design making use of every inch of space and offering both style and function!*

*Feel the ease!*



# THE TAYLOR

THE FRONT SUITE | 1,390 SQ. FT.  
2 BED | 2.5 BATH



MAIN LEVEL



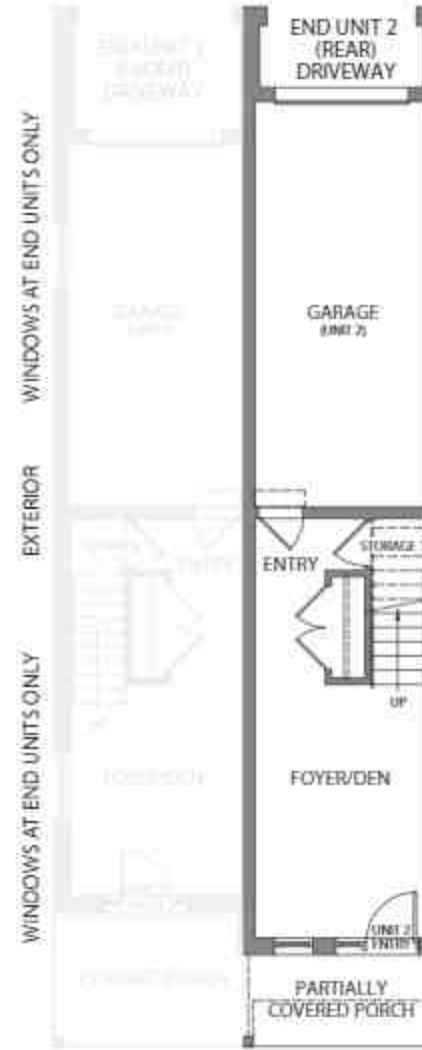
SECOND LEVEL



THIRD LEVEL

# THE WESTON

THE REAR SUITE | 1,445 SQ. FT.  
2 BED | 2.5 BATH



MAIN LEVEL



SECOND LEVEL



THIRD LEVEL

All drawings are Artist's Conception only and may vary slightly from the final product. All floor plans are subject to change without notice. Actual square footage may vary from stated area, and square footage has been calculated based on market listing square according to HUDSON rules and does not include garage or basement area (unless otherwise stated). More detailed information is set out in the Agreement of Purchase and Sale. Drawing may show optional features which may not be included in the base purchase price. Balconies and lawns may be required as shares for planting and maintenance. Always read drawings. If applicable, location may vary subject to public. In an ongoing review of our home owner's needs, changes may have been incorporated into our "New Home Features" and construction techniques. All plans and specifications are subject to reasonable modification, as necessary, at the discretion of the Builder, without notice. © 2017/2018





## THOUGHTFUL DESIGNS

For living the good life

*Nestled between the heart of the city, green spaces and exciting amenities, Argyle Village is a community where you'll live your best life. It's a place you'll love coming home to, a community masterfully-planned that feels welcoming and exciting. It's the home you've been dreaming of!*

Feel the love!

All buildings are under construction and subject to change without notice. © 2018



# IN THE SPIRIT OF CHOICE

## URBAN STACKED TOWNHOMES

**THE CHELSEA**  
TERRACE SUITE  
900 SQ. FT.

**THE MADISON**  
MAIN FLOOR SUITE  
780 SQ. FT.

**THE HUNTER**  
FRONT UPPER SUITE  
1,050 SQ. FT.

**THE KENNEDY**  
REAR UPPER SUITE  
980 SQ. FT.

## REAR LANE GARAGE TOWNHOMES

**THE TAYLOR**  
FRONT SUITE  
1,390 SQ. FT.

**THE WESTON**  
REAR SUITE  
1,445 SQ. FT.



Marketing is Reid's concept only and may vary pending final product and site plan approval. All dimensions to be verified on-site at time of purchase and may change depending on final survey. All information is based on preliminary planning. Final lot sizes, shapes, parking, light standard locations, utility easement locations, sidewalk and driveway locations are subject to final site plan approval. Features, utility performance may change. 1 & 1/2", January 2024



# THERE'S SO MUCH TO LOVE

## At Argyle Village in Guelph

*Connect with others, enjoy time alone, host a dinner party, embark on a night out, or an adventure... no matter your mood, the easy location and exciting vibe at Argyle Village is the perfect place to start creating moments you'll never forget.*

*Feel the adventure!*





# IN THE SPIRIT OF GOOD DESIGN

## DESIGNER INSPIRATION PACKAGES

*For stylish & functional living*

The design experts at Reid's Heritage Homes have carefully selected stunning design packages that truly shine!

At Argyle Village, you'll choose from beautiful selections that will enhance your home and make it personally yours. With a lovely choice of materials, colour palettes and finishes that have been expertly curated, your home is sure to be stylish, comforting and as unique as you.

### BONE DRY CAPPUCCINO



### COLD BREW



### FLAT WHITE

### ESPRESSO MACCHIATO



### LONDON FOG LATTE

Selections, options and prices are subject to change without notice. | © 2023



# OUR PROMISE TO YOU

WE DON'T  
JUST BUILD  
COMMUNITIES

*We ARE one.*



When you purchase a home from Reid's Heritage Homes you can feel assured that we will deliver the very highest level of design, construction and customer service. This has been demonstrated throughout our 45-year history and underlines what the word "heritage" means to us: treating customers with kindness, respect and compassion throughout the home purchase and building process.

At Reid's Heritage Homes, we don't just build communities, we are one. We strive to create a highly inclusive and supportive work environment for our team members and to extend this inclusivity and support to our purchasers. We recognize that

when people buy a new home they have hopes of becoming connected to a community where they will be warmly welcomed. We feel that sense of community should begin with us.

Our craftsmanship, quality and customer care starts with the very first design concept and goes all the way through to every single tradesperson and supplier who walks through the door. We believe there is much more to buying a new home than just handing over a set of keys. There is a process of communication, understanding and caring that is very individualized and can only be delivered by a first-class Customer Experience Team. As such, our Customer Experience

Team works closely with purchasers to keep them fully informed every step of the way.

Buying a new home is an exciting time, a once-in-a-lifetime experience for many people. The Reid's Heritage Homes promise is to guide you through your home buying experience with kindness, respect and compassion.



REID'S HERITAGE  
HOMES

[reidsheritagehomes.com](http://reidsheritagehomes.com)