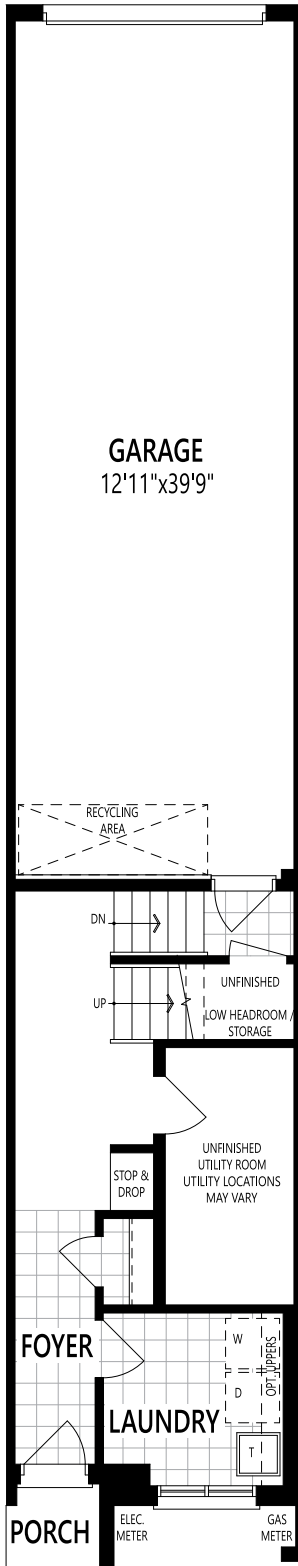


# THE LYNNDALE

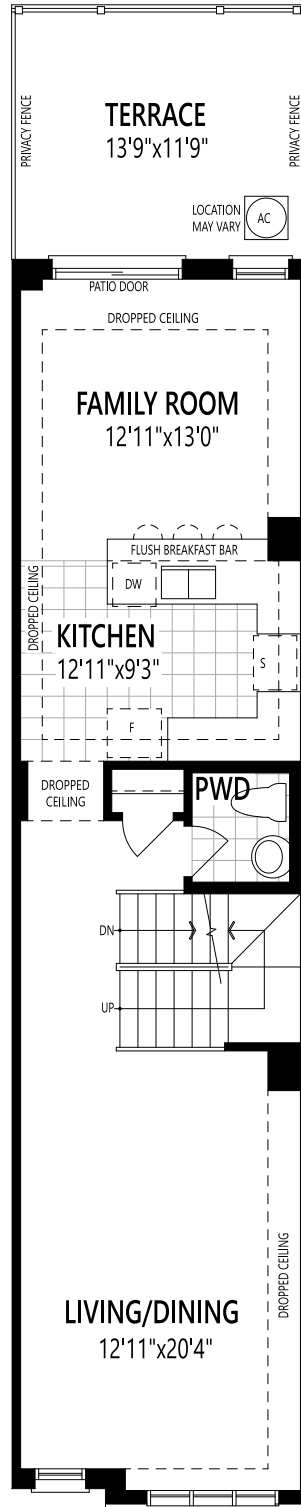
## TERRACE TOWNHOME

1,858  
SQ. FT.

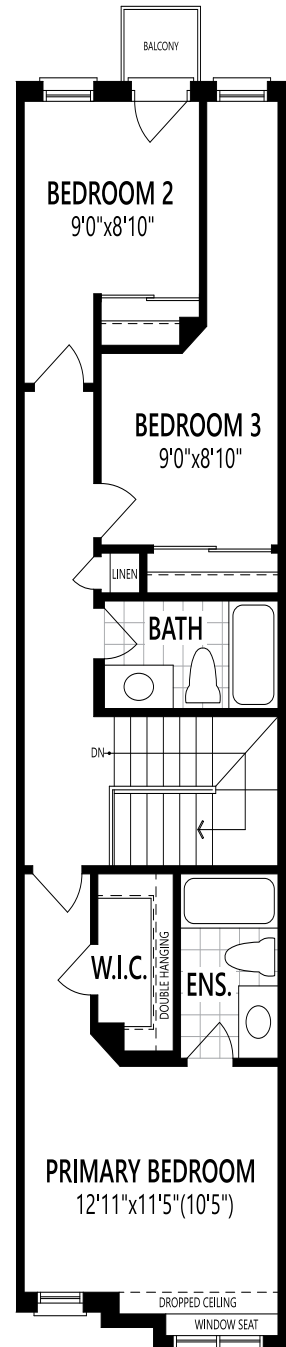
LOT# 3003



**GROUND FLOOR**



**SECOND FLOOR**



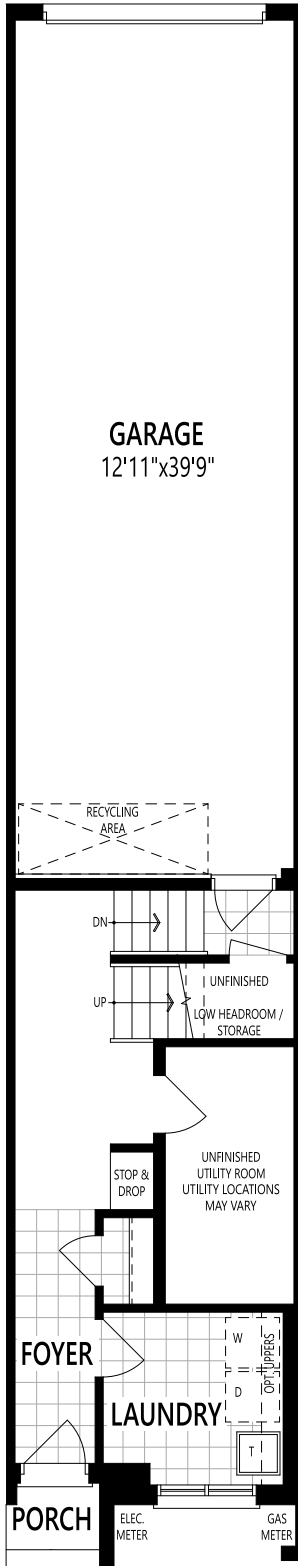
**THIRD FLOOR**

CRLD All illustrations are artist's concept. Specifications, terms and conditions are subject to change without notice. All measurements and dimensions are approximate only and not guaranteed to be exact or to scale. These floor plans and room dimensions apply to the 'English Manor 1-2' elevation of this model type. Actual usable floor space may vary from the stated floor area. Plans and room dimensions may vary according to elevation. Plan may be built as the mirror image. "Quiet wall" (where shown) means a wall in which additional insulation has been installed. This will assist in reducing, but not eliminating, ambient sound from adjoining rooms and mechanical systems. The extent of the reduction will vary depending upon various factors including, without limitation, the presence and extent of mechanical systems located in the wall. Lots with a rear-lot/side-lot catch basin easement will be required to purchase the in-bound or alternate fireplace option. Please consult your sales representative. E.&O.E. June 2024. Copyright 2024 - Mattamy Homes Limited.

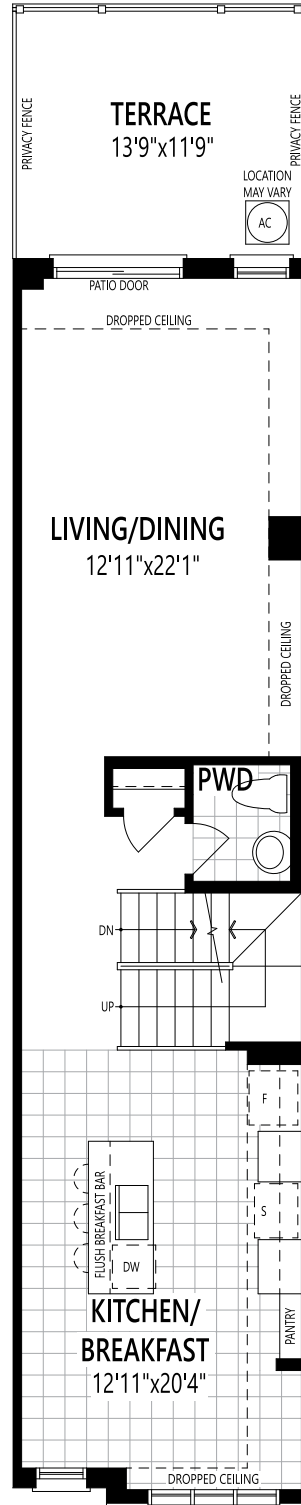
# THE LYNNDALE

## TERRACE TOWNHOME

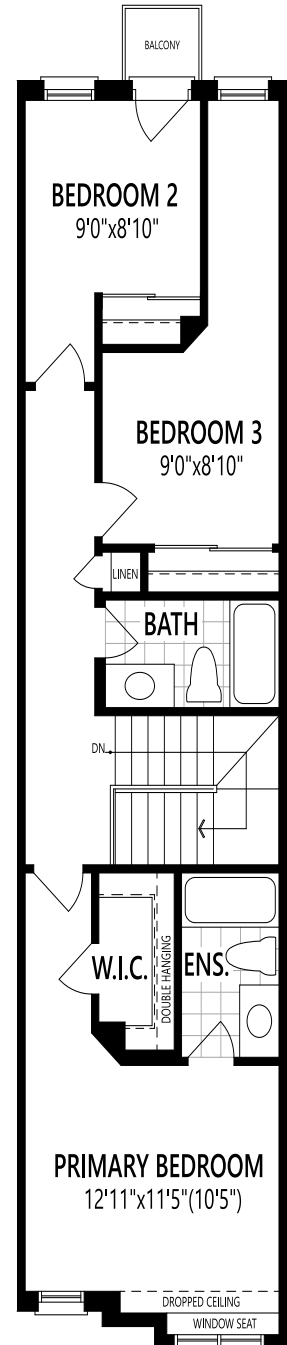
1,858  
SQ. FT.  
LOT# 3004



**GROUND FLOOR**



**SECOND FLOOR**



**THIRD FLOOR**

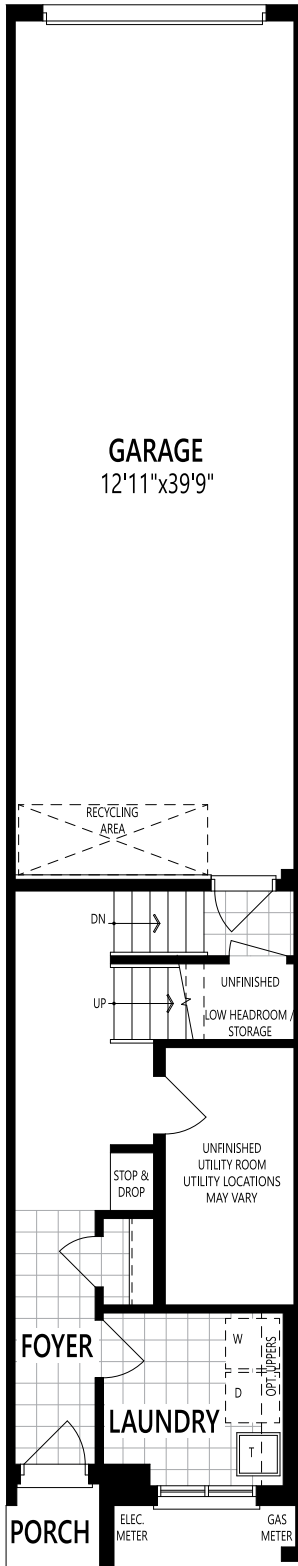
CRLD All illustrations are artist's concept. Specifications, terms and conditions are subject to change without notice. All measurements and dimensions are approximate only and not guaranteed to be exact or to scale. These floor plans and room dimensions apply to the 'English Manor 1-2' elevation of this model type. Actual usable floor space may vary from the stated floor area. Plans and room dimensions may vary according to elevation. Plan may be built as the mirror image. "Quiet wall" (where shown) means a wall in which additional insulation has been installed. This will assist in reducing, but not eliminating, ambient sound from adjoining rooms and mechanical systems. The extent of the reduction will vary depending upon various factors including, without limitation, the presence and extent of mechanical systems located in the wall. Lots with a rear-lot/side-lot catch basin easement will be required to purchase the in-bound or alternate fireplace option. Please consult your sales representative. E.&O.E. June 2024. Copyright 2024 - Mattamy Homes Limited.

# THE LYNNDALE

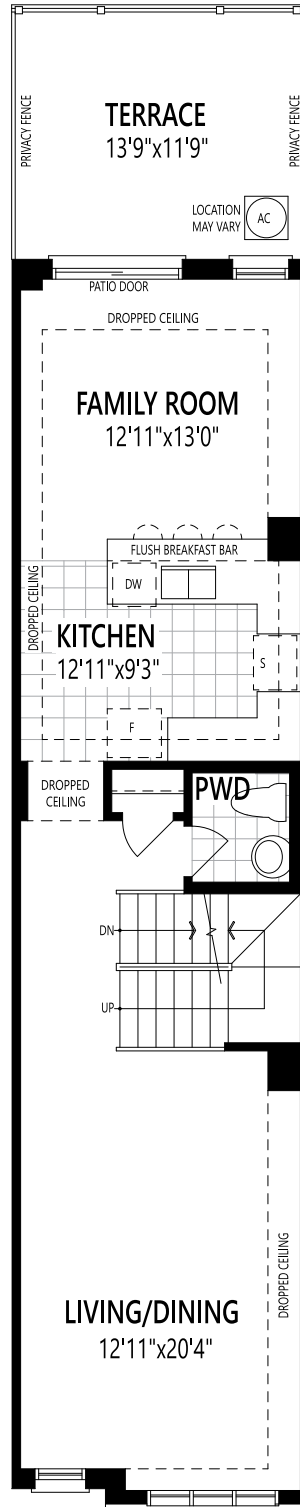
## TERRACE TOWNHOME

1,858  
SQ. FT.

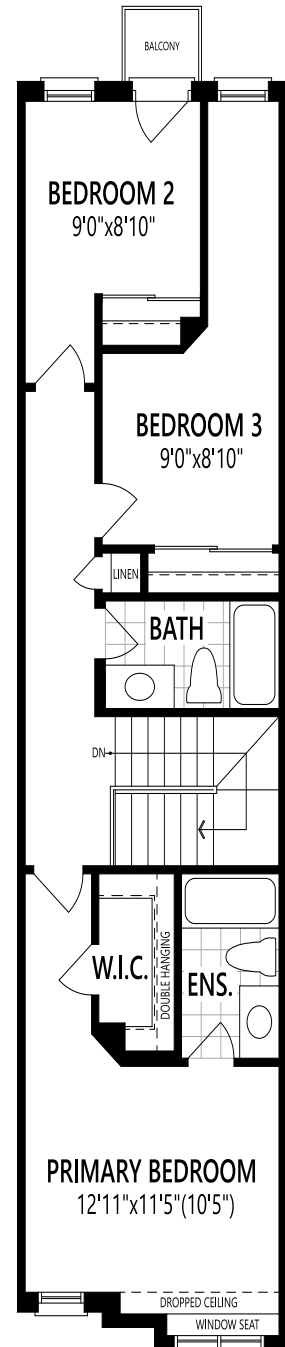
LOT# 3005



**GROUND FLOOR**



**SECOND FLOOR**



**THIRD FLOOR**

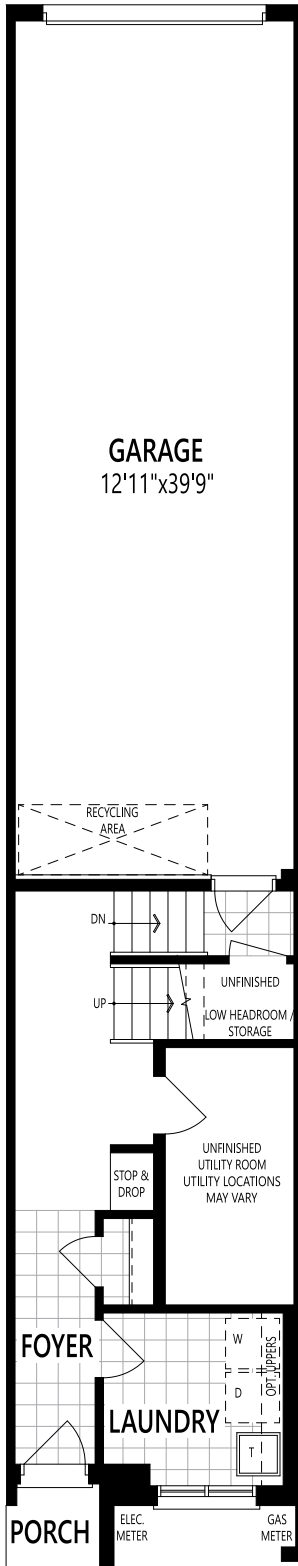
CRLD All illustrations are artist's concept. Specifications, terms and conditions are subject to change without notice. All measurements and dimensions are approximate only and not guaranteed to be exact or to scale. These floor plans and room dimensions apply to the 'English Manor 1-2' elevation of this model type. Actual usable floor space may vary from the stated floor area. Plans and room dimensions may vary according to elevation. Plan may be built as the mirror image. "Quiet wall" (where shown) means a wall in which additional insulation has been installed. This will assist in reducing, but not eliminating, ambient sound from adjoining rooms and mechanical systems. The extent of the reduction will vary depending upon various factors including, without limitation, the presence and extent of mechanical systems located in the wall. Lots with a rear-lot/side-lot catch basin easement will be required to purchase the in-bound or alternate fireplace option. Please consult your sales representative. E.&O.E. June 2024. Copyright 2024 - Mattamy Homes Limited.

# THE LYNNDALE

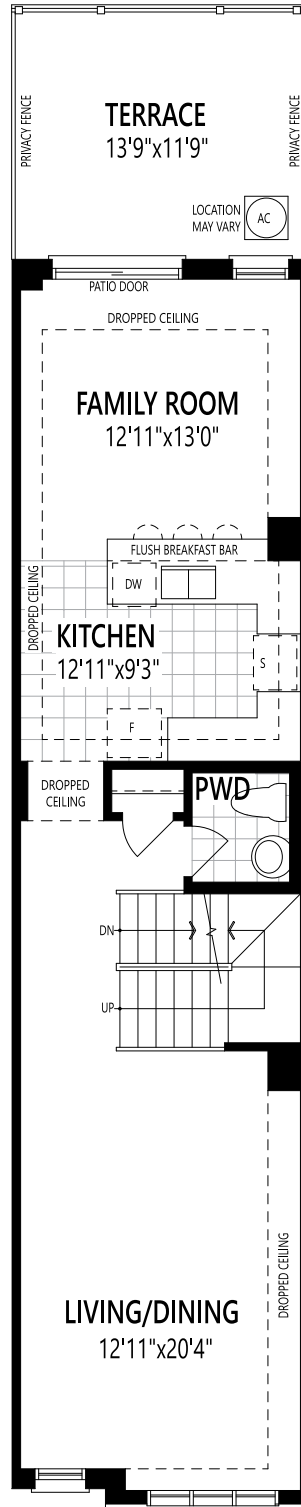
## TERRACE TOWNHOME

1,858  
SQ. FT.

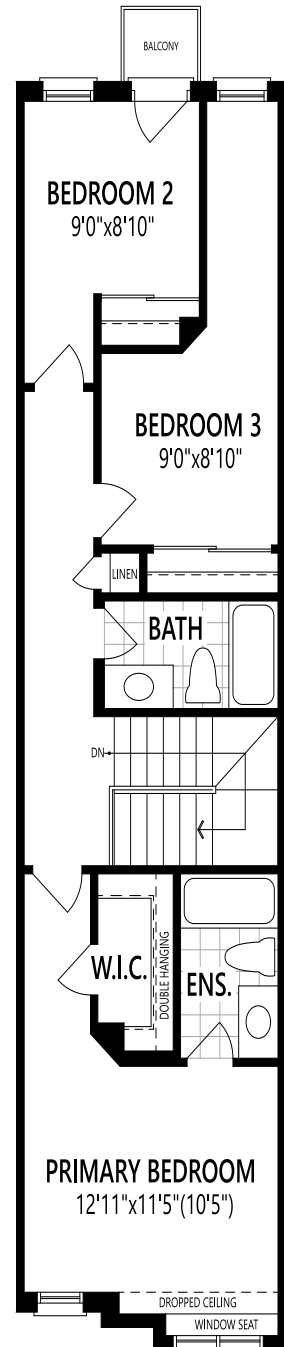
LOT# 3006



**GROUND FLOOR**



**SECOND FLOOR**



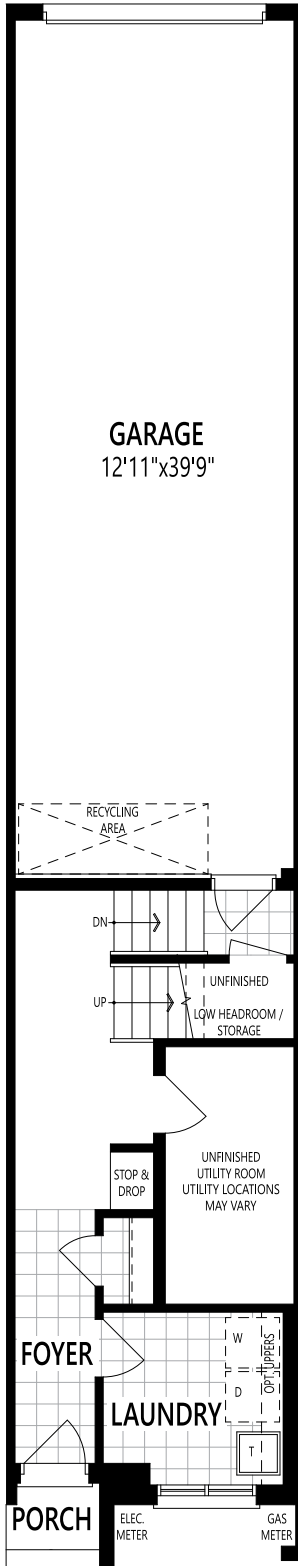
**THIRD FLOOR**

CRLD All illustrations are artist's concept. Specifications, terms and conditions are subject to change without notice. All measurements and dimensions are approximate only and not guaranteed to be exact or to scale. These floor plans and room dimensions apply to the 'English Manor 1-2' elevation of this model type. Actual usable floor space may vary from the stated floor area. Plans and room dimensions may vary according to elevation. Plan may be built as the mirror image. "Quiet wall" (where shown) means a wall in which additional insulation has been installed. This will assist in reducing, but not eliminating, ambient sound from adjoining rooms and mechanical systems. The extent of the reduction will vary depending upon various factors including, without limitation, the presence and extent of mechanical systems located in the wall. Lots with a rear-lot/side-lot catch basin easement will be required to purchase the in-bound or alternate fireplace option. Please consult your sales representative. E.&O.E. June 2024. Copyright 2024 - Mattamy Homes Limited.

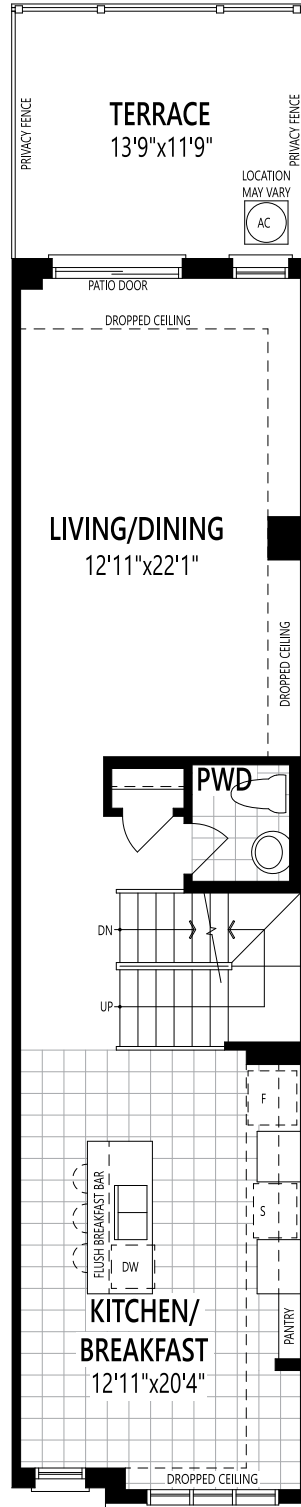
# THE LYNNDALE

## TERRACE TOWNHOME

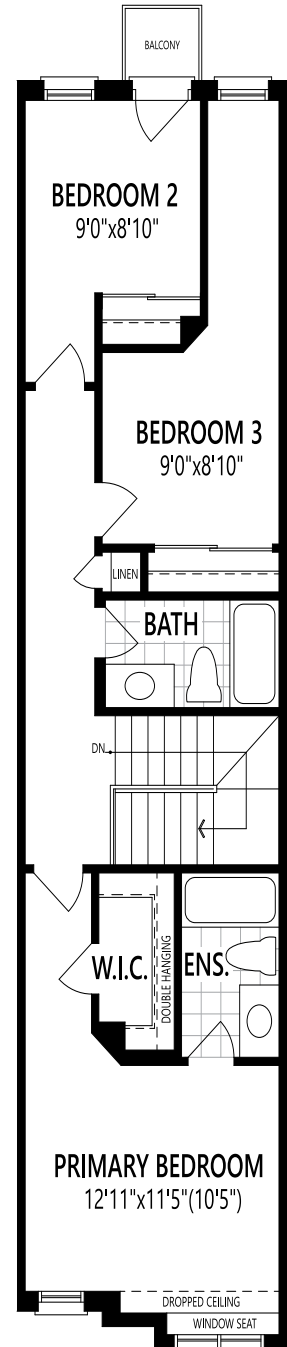
1,858  
SQ. FT.  
LOT# 3007



**GROUND FLOOR**



**SECOND FLOOR**



**THIRD FLOOR**

CRLD All illustrations are artist's concept. Specifications, terms and conditions are subject to change without notice. All measurements and dimensions are approximate only and not guaranteed to be exact or to scale. These floor plans and room dimensions apply to the 'English Manor 1-2' elevation of this model type. Actual usable floor space may vary from the stated floor area. Plans and room dimensions may vary according to elevation. Plan may be built as the mirror image. "Quiet wall" (where shown) means a wall in which additional insulation has been installed. This will assist in reducing, but not eliminating, ambient sound from adjoining rooms and mechanical systems. The extent of the reduction will vary depending upon various factors including, without limitation, the presence and extent of mechanical systems located in the wall. Lots with a rear-lot/side-lot catch basin easement will be required to purchase the in-bound or alternate fireplace option. Please consult your sales representative. E.&O.E. June 2024. Copyright 2024 - Mattamy Homes Limited.

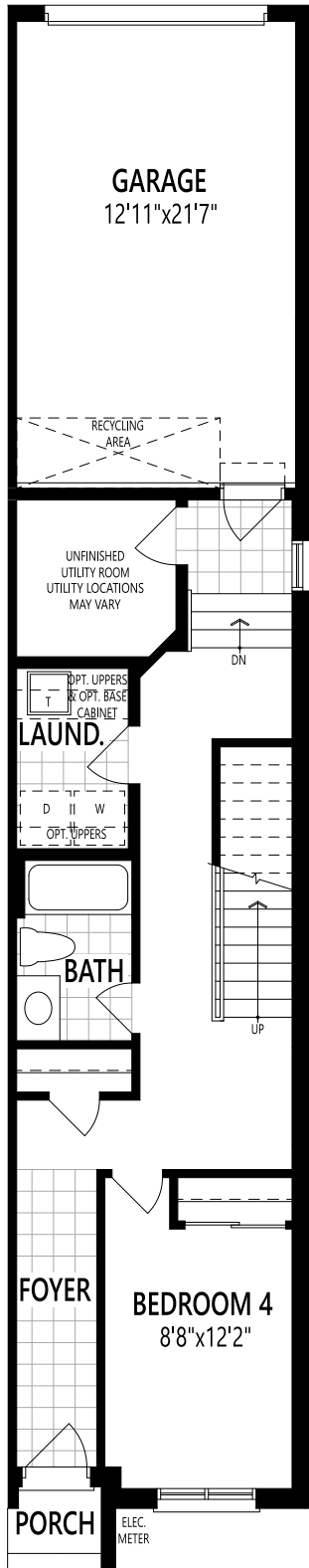
# THE TAYLOR END

## TERRACE TOWNHOME

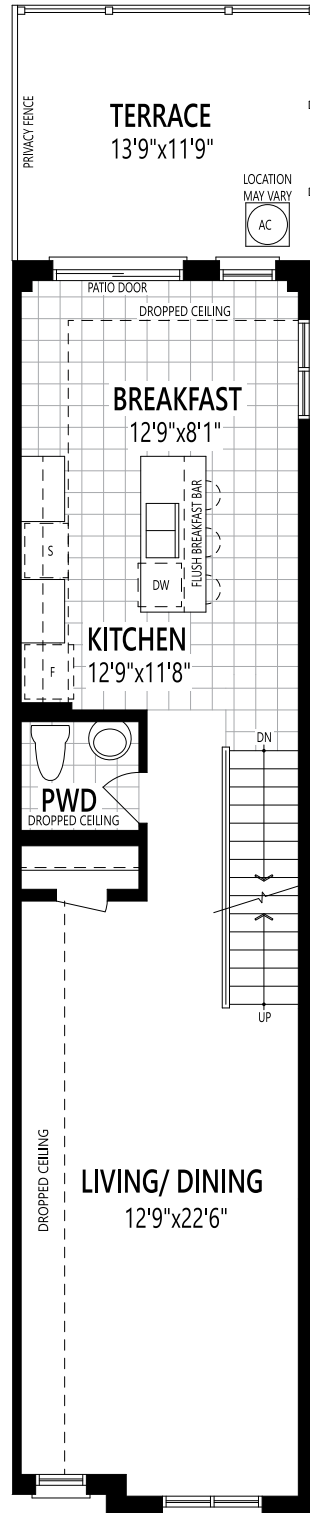
2,161

SQ. FT.

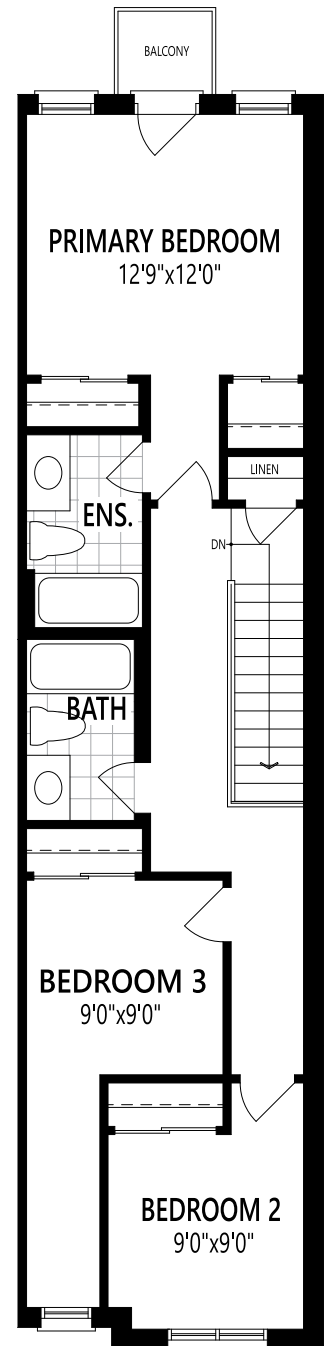
LOT# 3008



GROUND FLOOR



SECOND FLOOR



THIRD FLOOR

CRLD All illustrations are artist's concept. Specifications, terms and conditions are subject to change without notice. All measurements and dimensions are approximate only and not guaranteed to be exact or to scale. These floor plans and room dimensions apply to the 'English Manor 1-2' elevation of this model type. Actual usable floor space may vary from the stated floor area. Plans and room dimensions may vary according to elevation. Plan may be built as the mirror image. "Quiet wall" (where shown) means a wall in which additional insulation has been installed. This will assist in reducing, but not eliminating, ambient sound from adjoining rooms and mechanical systems. The extent of the reduction will vary depending upon various factors including, without limitation, the presence and extent of mechanical systems located in the wall. Lots with a rear-lot/side-lot catch basin easement will be required to purchase the in-bound or alternate fireplace option. Please consult your sales representative. E.&O.E. June 2024. Copyright 2024 - Mattamy Homes Limited.

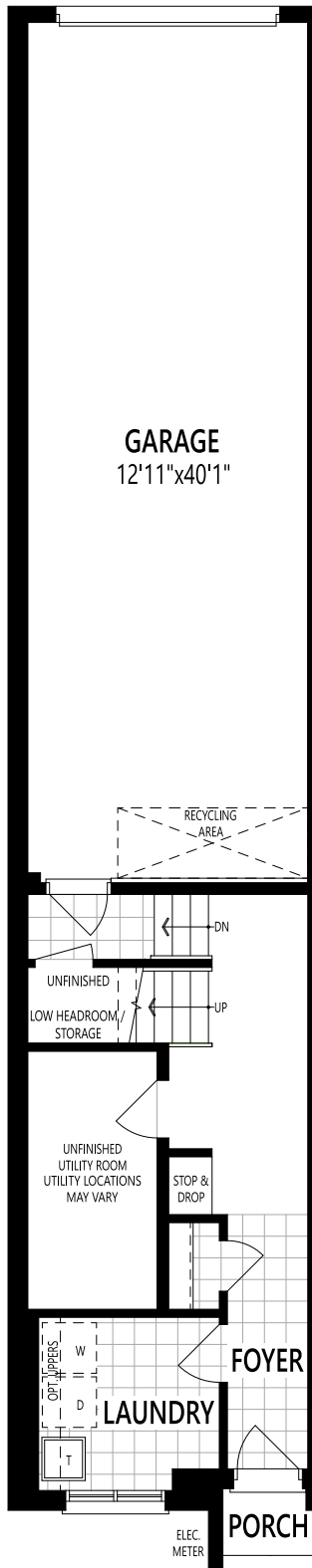
# THE LYNNDALE END

## TERRACE TOWNHOME

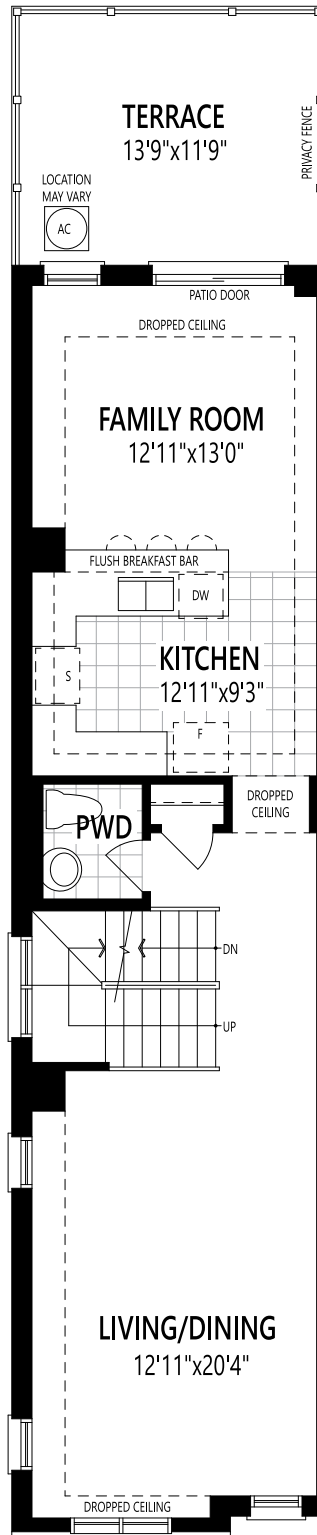
1,924

SQ. FT.

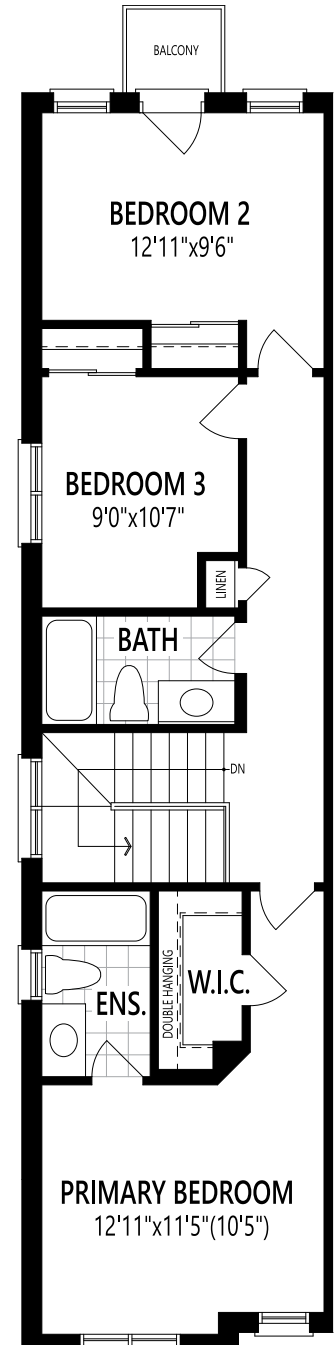
LOT# 3009



**GROUND FLOOR**



**SECOND FLOOR**



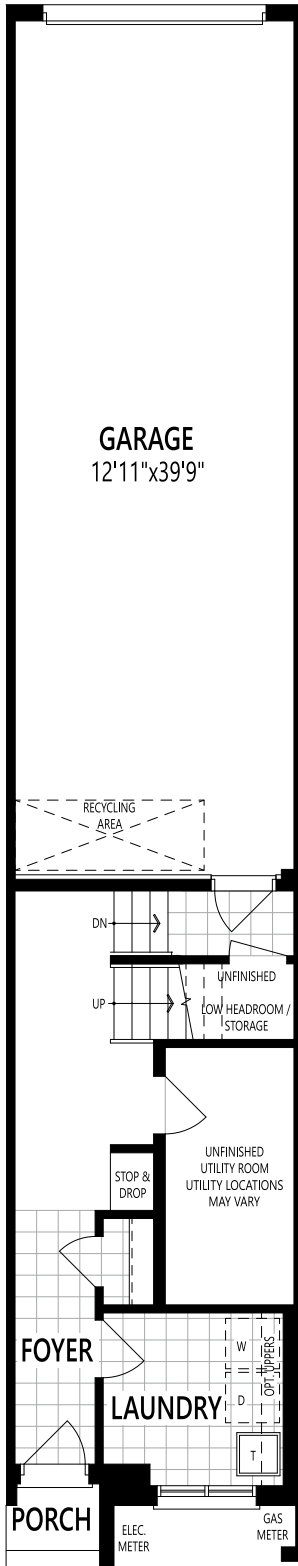
**THIRD FLOOR**

CRLD All illustrations are artist's concept. Specifications, terms and conditions are subject to change without notice. All measurements and dimensions are approximate only and not guaranteed to be exact or to scale. These floor plans and room dimensions apply to the 'English Manor 1-2' elevation of this model type. Actual usable floor space may vary from the stated floor area. Plans and room dimensions may vary according to elevation. Plan may be built as the mirror image. "Quiet wall" (where shown) means a wall in which additional insulation has been installed. This will assist in reducing, but not eliminating, ambient sound from adjoining rooms and mechanical systems. The extent of the reduction will vary depending upon various factors including, without limitation, the presence and extent of mechanical systems located in the wall. Lots with a rear-lot/side-lot catch basin easement will be required to purchase the in-bound or alternate fireplace option. Please consult your sales representative. E.&O.E. June 2024. Copyright 2024 - Mattamy Homes Limited.

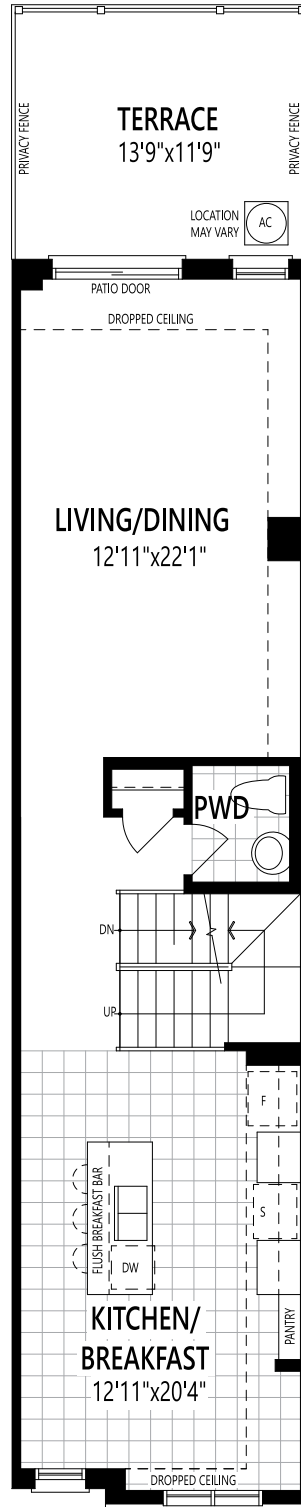
# THE LYNNDALE

## TERRACE TOWNHOME

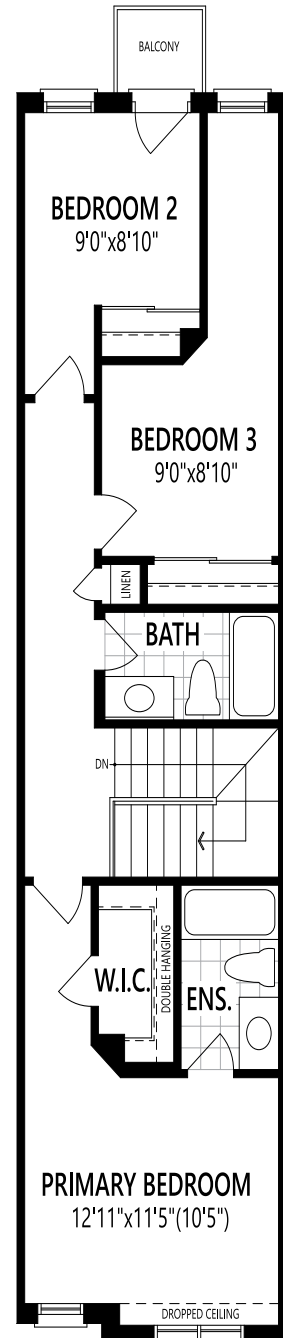
1,858  
SQ. FT.  
LOT# 3010



**GROUND FLOOR**



**SECOND FLOOR**



**THIRD FLOOR**

CRLD All illustrations are artist's concept. Specifications, terms and conditions are subject to change without notice. All measurements and dimensions are approximate only and not guaranteed to be exact or to scale. These floor plans and room dimensions apply to the 'English Manor 1-2' elevation of this model type. Actual usable floor space may vary from the stated floor area. Plans and room dimensions may vary according to elevation. Plan may be built as the mirror image. "Quiet wall" (where shown) means a wall in which additional insulation has been installed. This will assist in reducing, but not eliminating, ambient sound from adjoining rooms and mechanical systems. The extent of the reduction will vary depending upon various factors including, without limitation, the presence and extent of mechanical systems located in the wall. Lots with a rear-lot/side-lot catch basin easement will be required to purchase the in-bound or alternate fireplace option. Please consult your sales representative. E.&O.E. June 2024. Copyright 2024 - Mattamy Homes Limited.

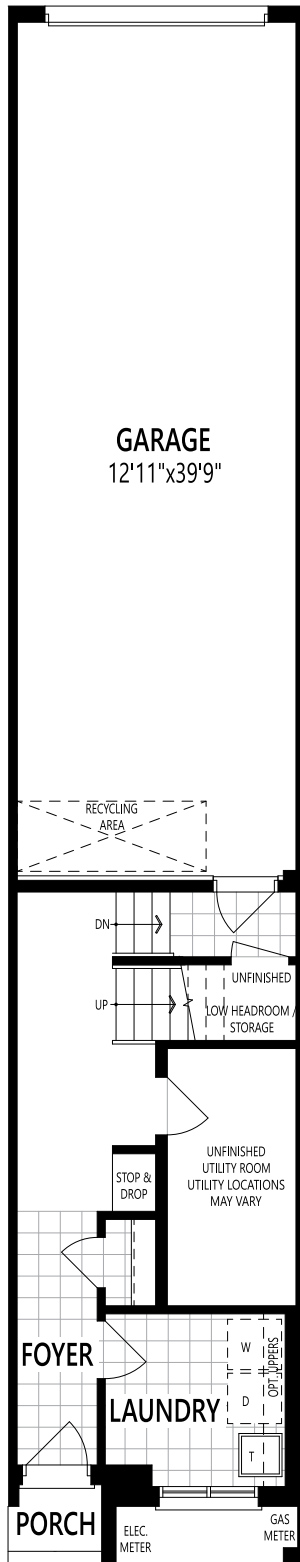


# THE LYNNDALE

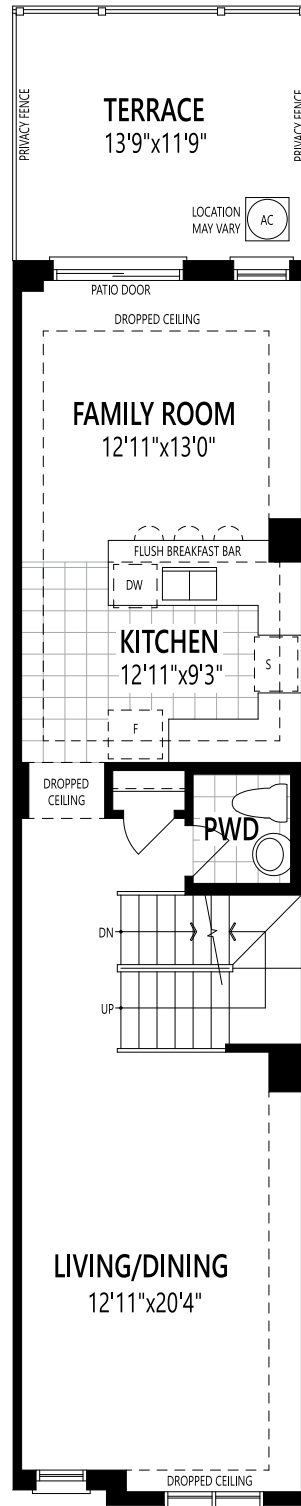
## TERRACE TOWNHOME

1,858  
SQ. FT.

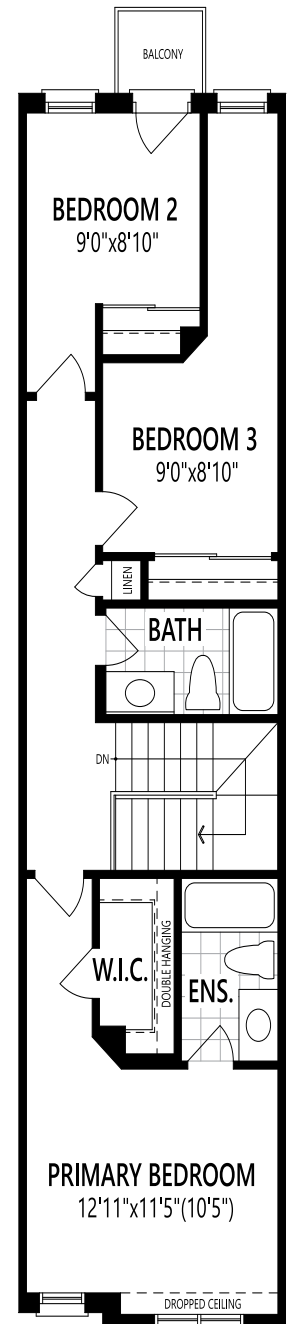
LOT# 3011



**GROUND FLOOR**



**SECOND FLOOR**



**THIRD FLOOR**

CRLD All illustrations are artist's concept. Specifications, terms and conditions are subject to change without notice. All measurements and dimensions are approximate only and not guaranteed to be exact or to scale. These floor plans and room dimensions apply to the 'English Manor 1-2' elevation of this model type. Actual usable floor space may vary from the stated floor area. Plans and room dimensions may vary according to elevation. Plan may be built as the mirror image. "Quiet wall" (where shown) means a wall in which additional insulation has been installed. This will assist in reducing, but not eliminating, ambient sound from adjoining rooms and mechanical systems. The extent of the reduction will vary depending upon various factors including, without limitation, the presence and extent of mechanical systems located in the wall. Lots with a rear-lot/side-lot catch basin easement will be required to purchase the in-bound or alternate fireplace option. Please consult your sales representative. E.&O.E. June 2024. Copyright 2024 - Mattamy Homes Limited.

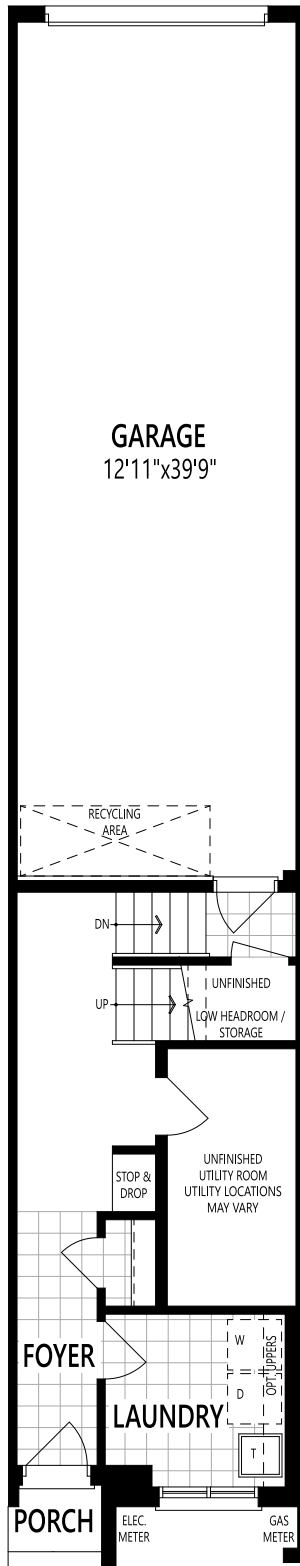
# THE LYNNDALE

## TERRACE TOWNHOME

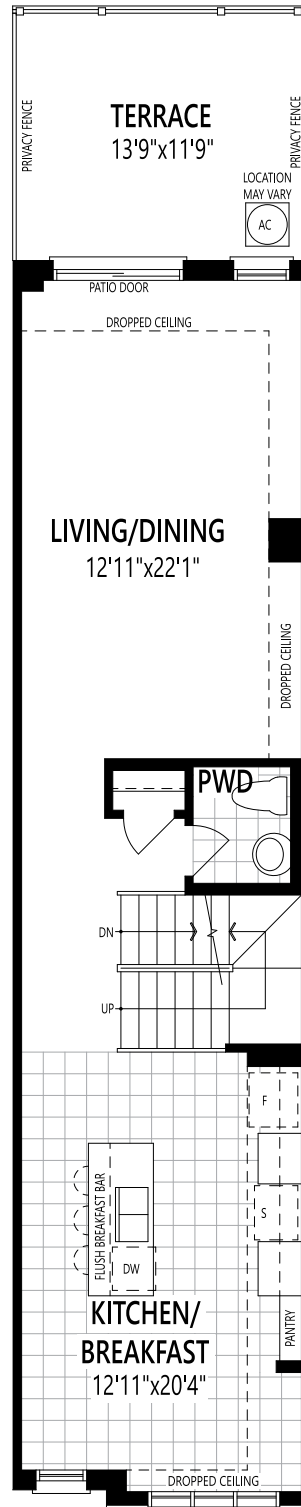
1,858

SQ. FT.

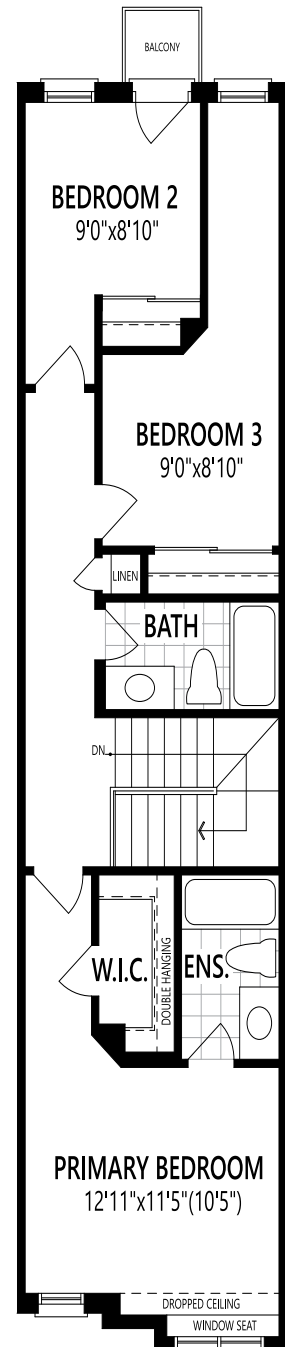
LOT# 3012



GROUND FLOOR



SECOND FLOOR



THIRD FLOOR

CRLD All illustrations are artist's concept. Specifications, terms and conditions are subject to change without notice. All measurements and dimensions are approximate only and not guaranteed to be exact or to scale. These floor plans and room dimensions apply to the 'English Manor 1-2' elevation of this model type. Actual usable floor space may vary from the stated floor area. Plans and room dimensions may vary according to elevation. Plan may be built as the mirror image. "Quiet wall" (where shown) means a wall in which additional insulation has been installed. This will assist in reducing, but not eliminating, ambient sound from adjoining rooms and mechanical systems. The extent of the reduction will vary depending upon various factors including, without limitation, the presence and extent of mechanical systems located in the wall. Lots with a rear-lot/side-lot catch basin easement will be required to purchase the in-bound or alternate fireplace option. Please consult your sales representative. E.&O.E. June 2024. Copyright 2024 - Mattamy Homes Limited.