

The Bayside



Elev. B 3,773 sq. ft.



Elev. C 3,772 sq. ft.

The Bayside

Elev. A 3,750 sq. ft. | Elev. B 3,773 sq. ft. | Elev. C 3,772 sq. ft.
(Includes 130 sq. ft. of Finished Basement Landing)

42'



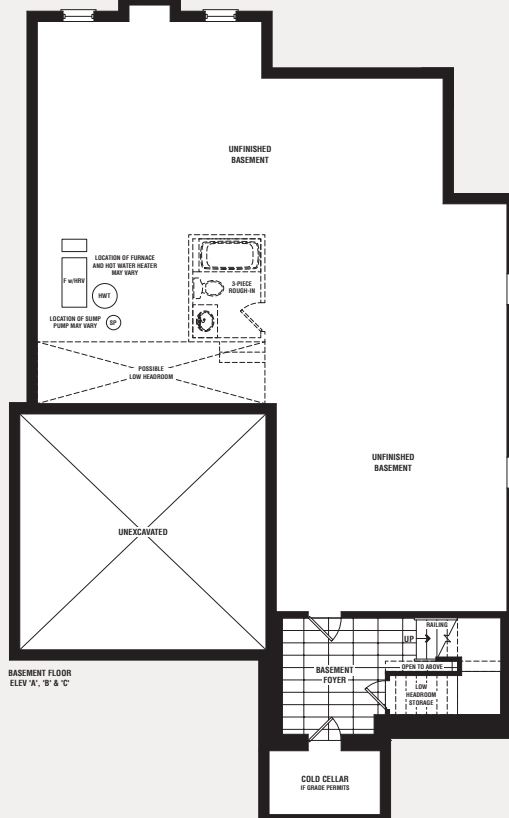
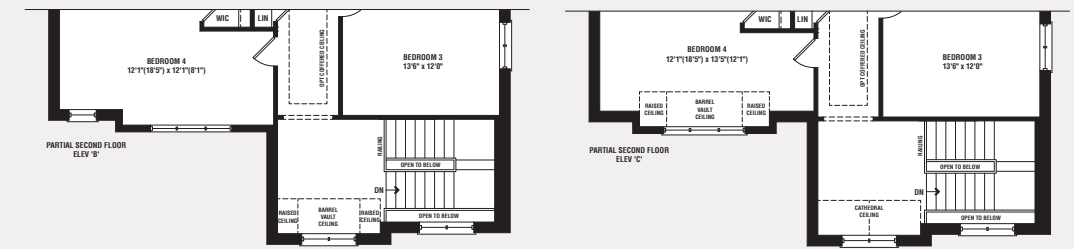
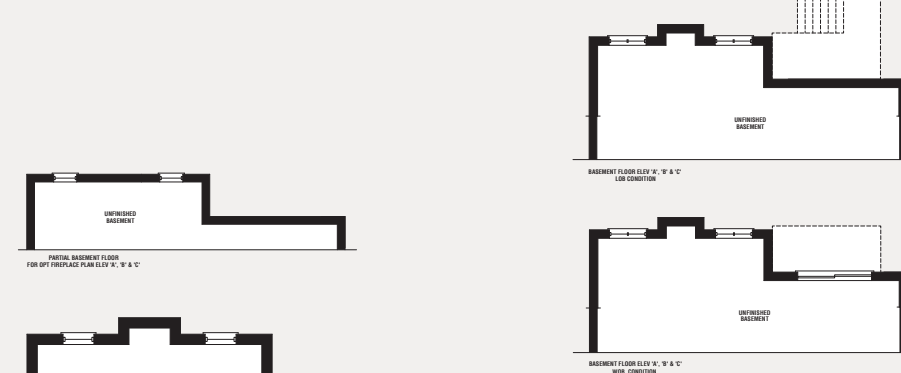
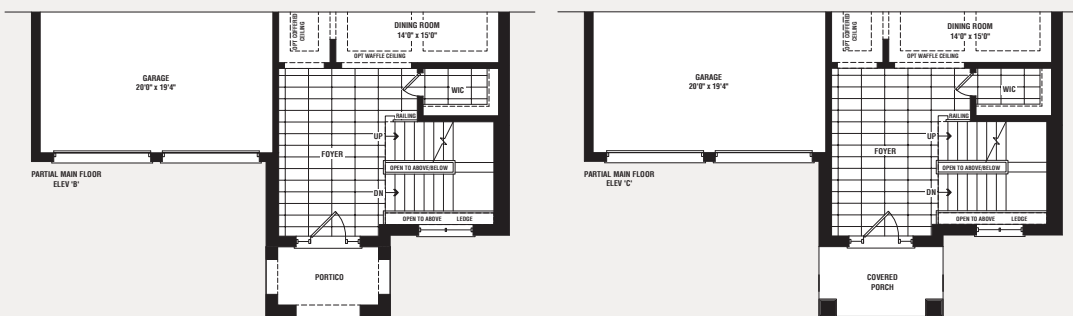
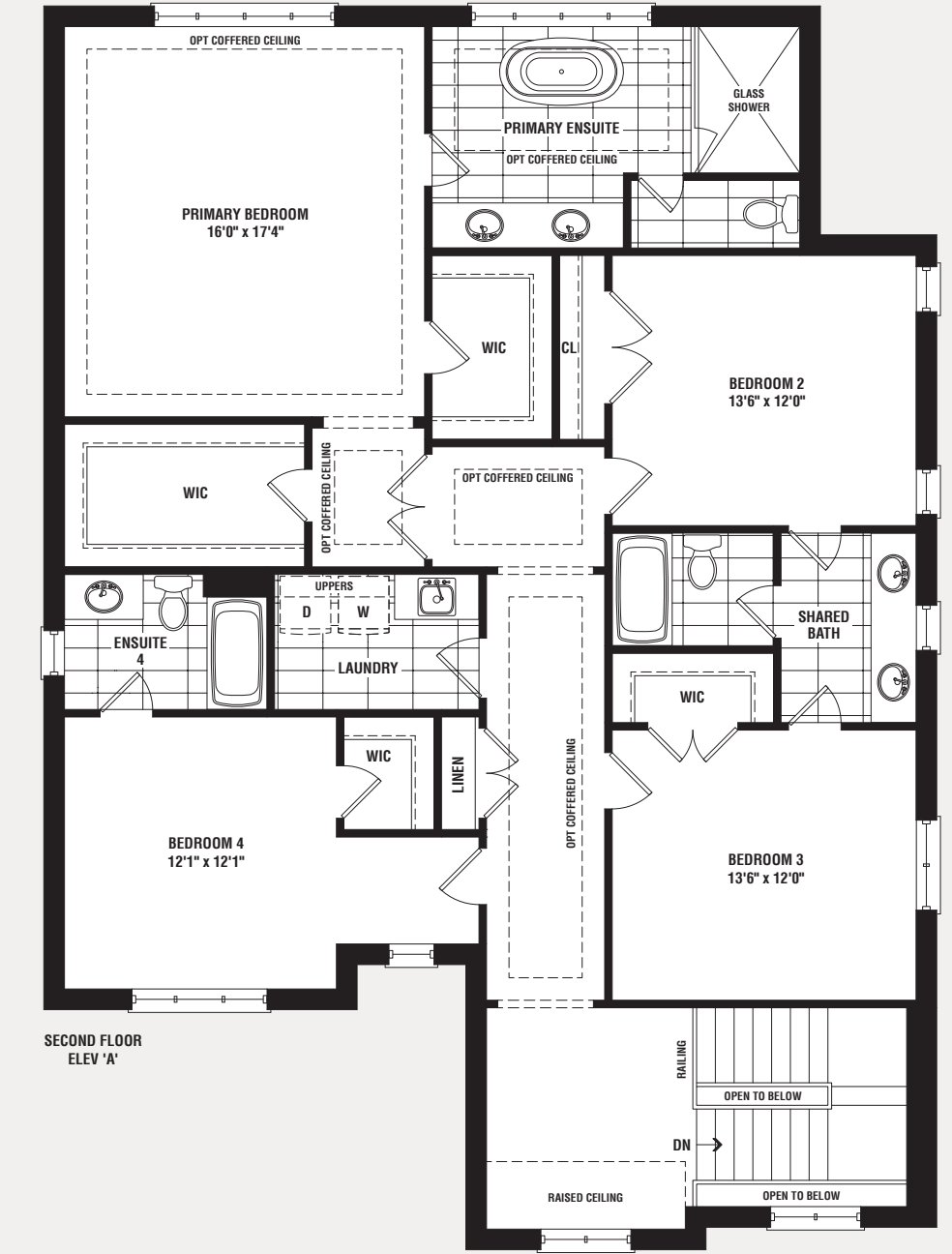
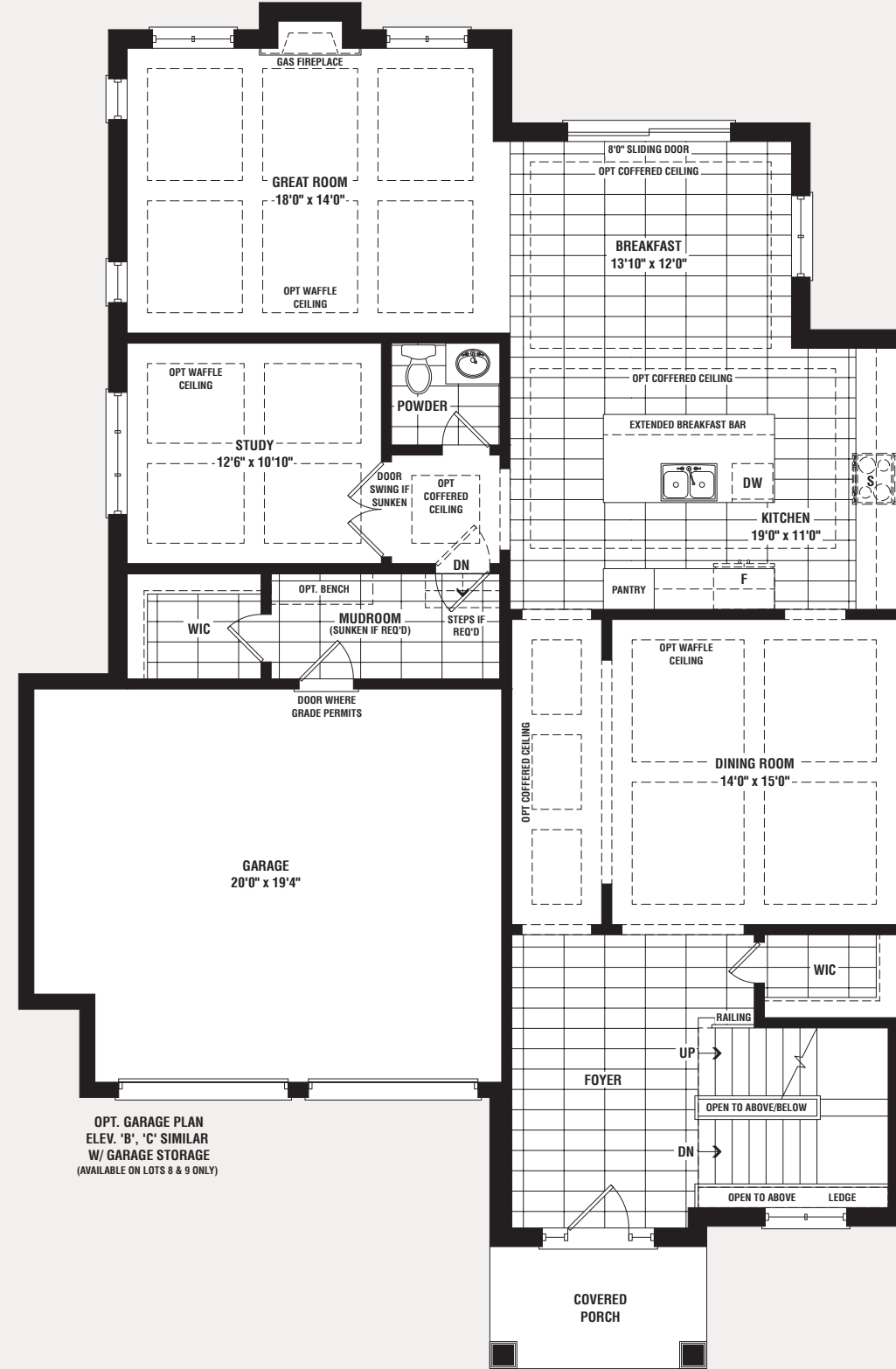
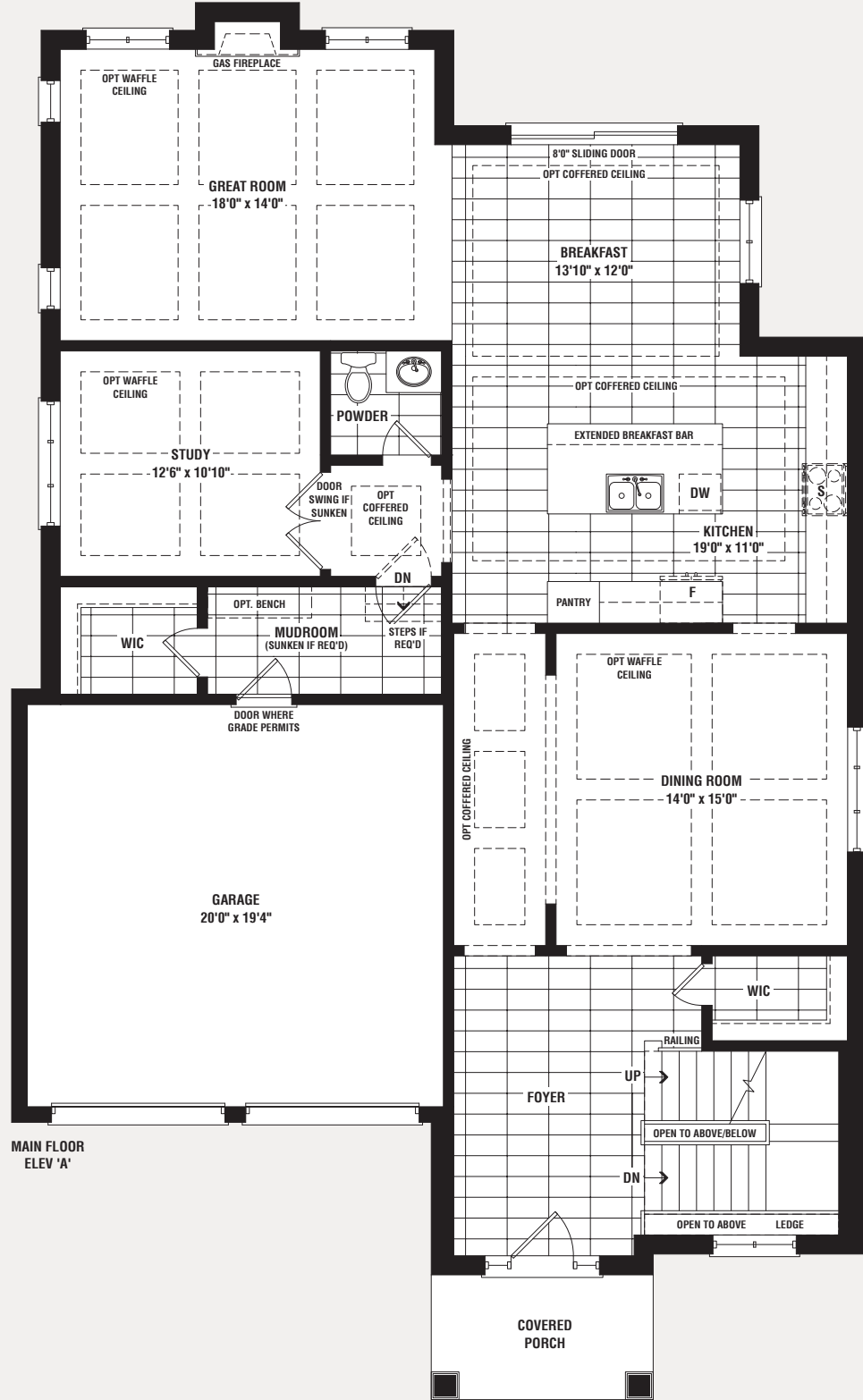
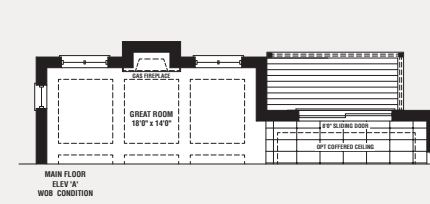
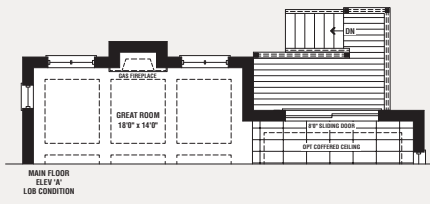
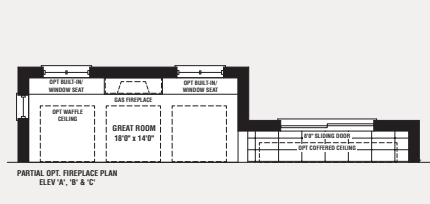
THE BAYSIDE | Elev. A 3,750 sq. ft. | Elev. B 3,773 sq. ft. | Elev. C 3,772 sq. ft.





The Bayside

Elev. A 3,750 sq. ft. | Elev. B 3,773 sq. ft. | Elev. C 3,772 sq. ft.
(Includes 130 sq. ft. of Finished Basement Landing)



The Marina



Elev. B 3,917 sq. ft.



Elev. C 3,914 sq. ft.

The Marina

Elev. A 3,917 sq. ft. | Elev. B 3,917 sq. ft. | Elev. C 3,914 sq. ft.
(Includes 96 sq. ft. of Finished Basement Landing)

42'



THE MARINA | Elev. A 3,917 sq. ft. | Elev. B 3,917 sq. ft. | Elev. C 3,914 sq. ft.



The Anchor



Elev. B 2,798 sq. ft.



Elev. C 2,804 sq. ft.

The Anchor

44'

Elev. A 2,808 sq. ft. | Elev. B 2,798 sq. ft. | Elev. C 2,804 sq. ft.
(Includes 67 sq. ft. of Finished Basement Landing)



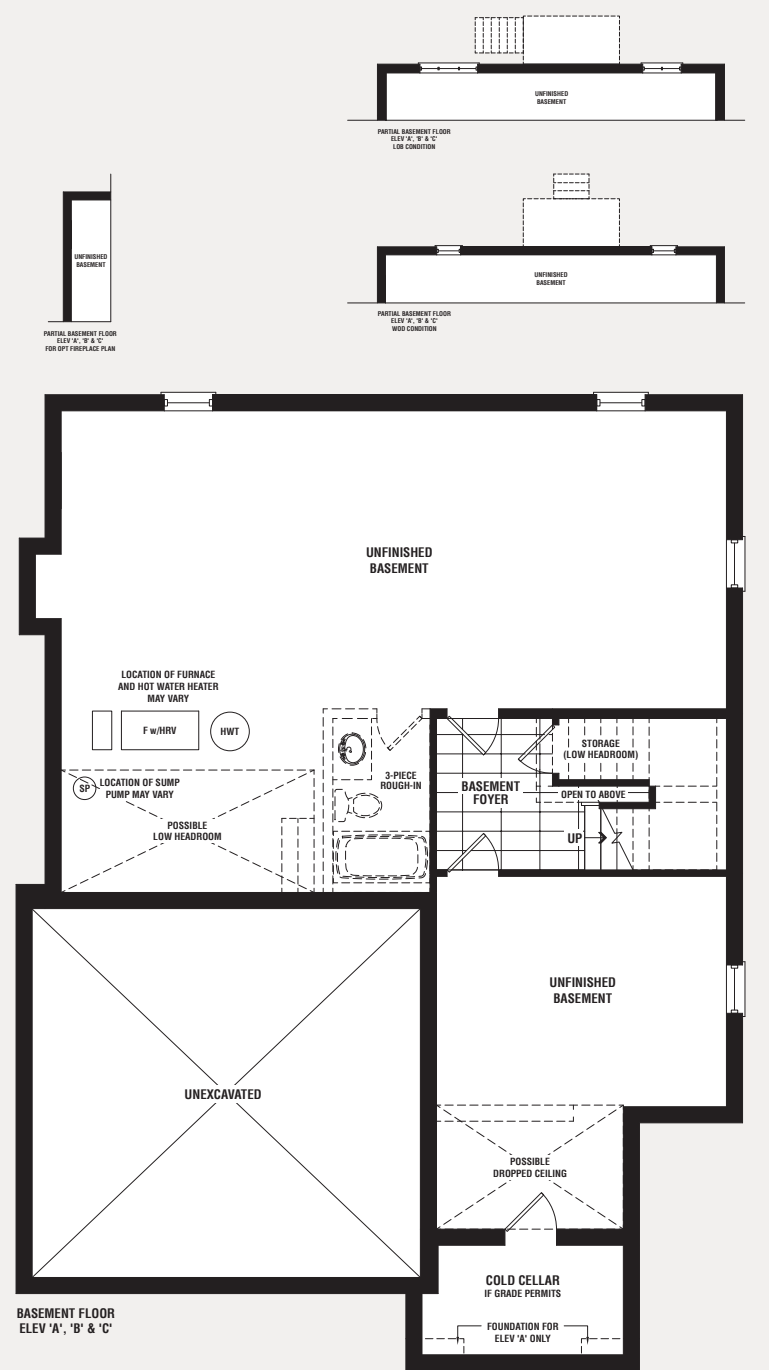
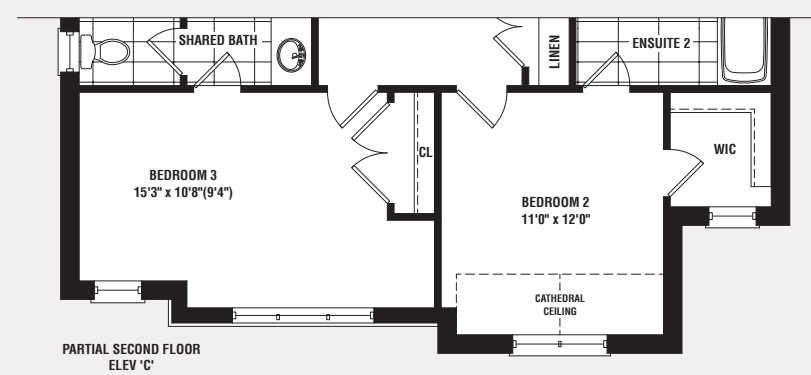
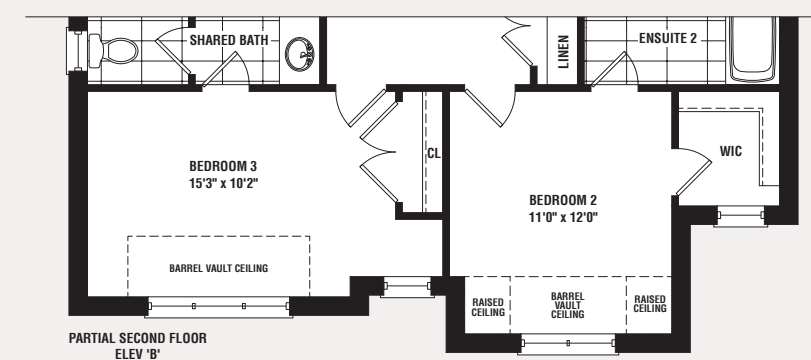
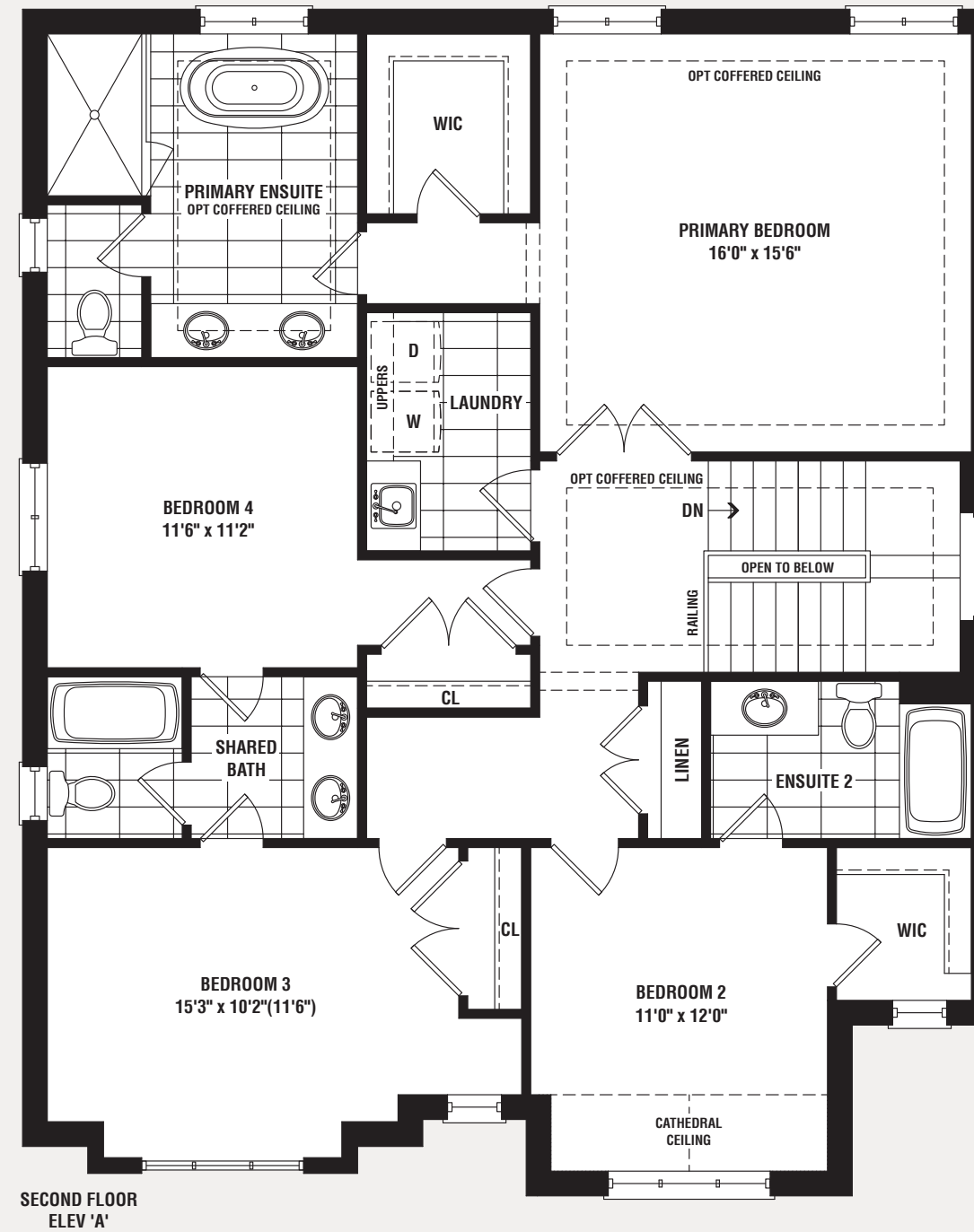
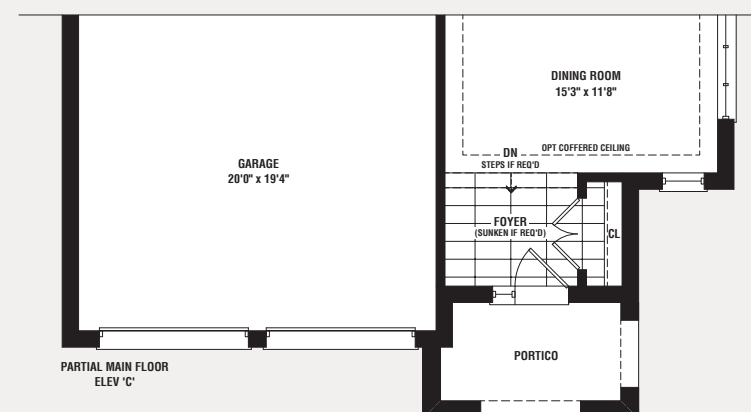
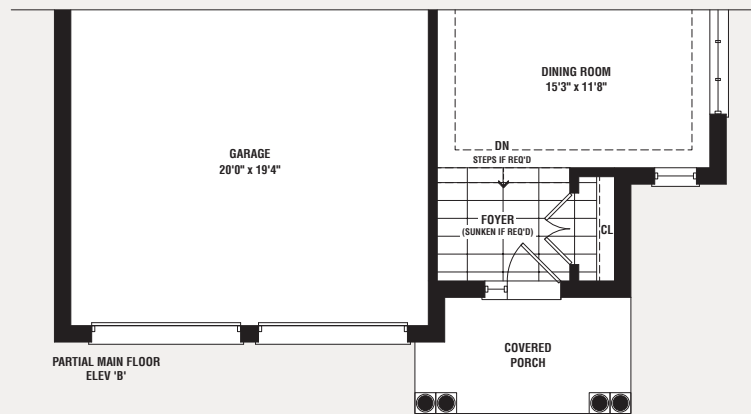
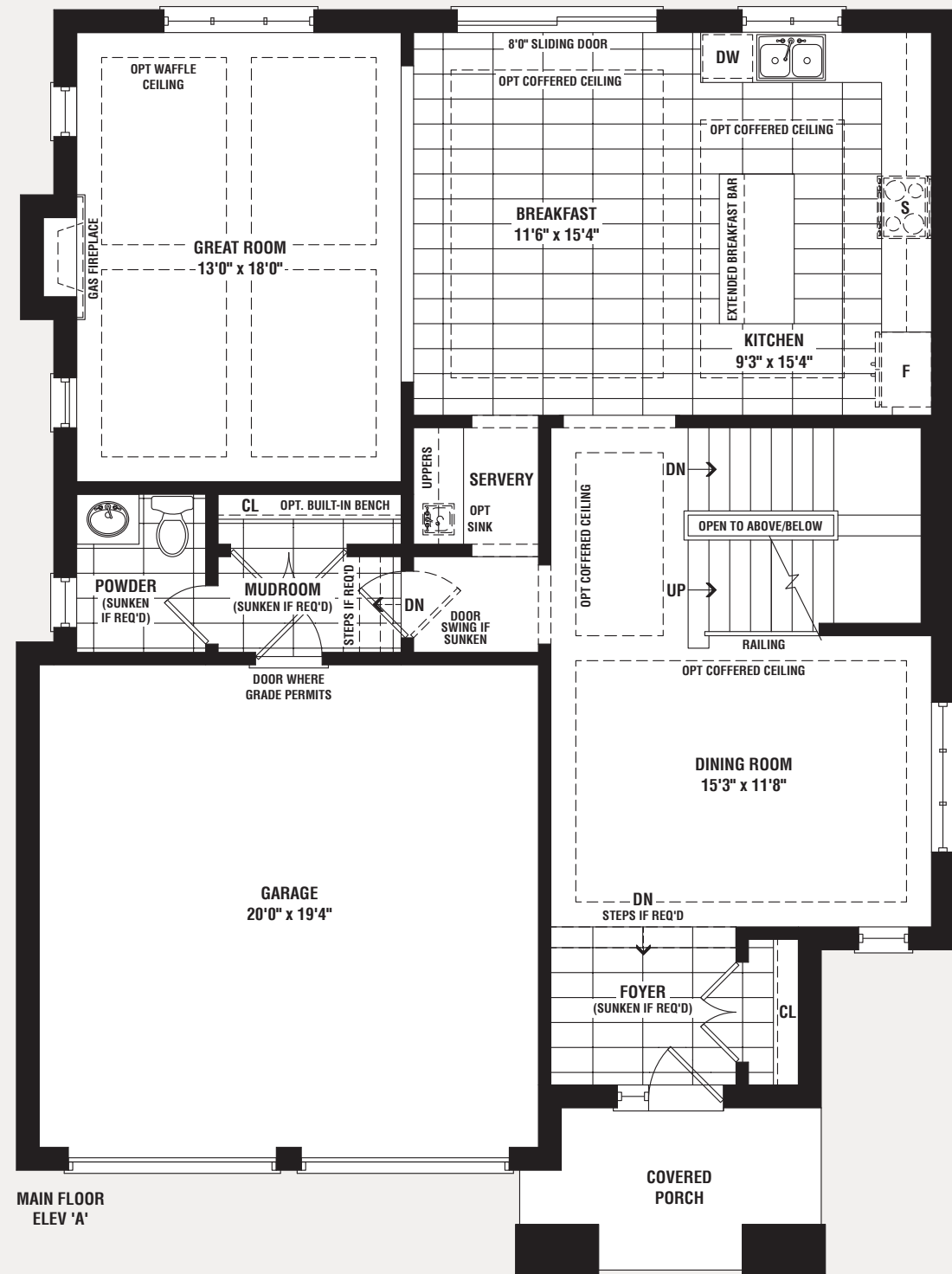
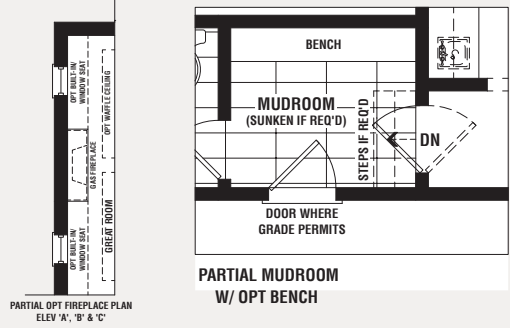
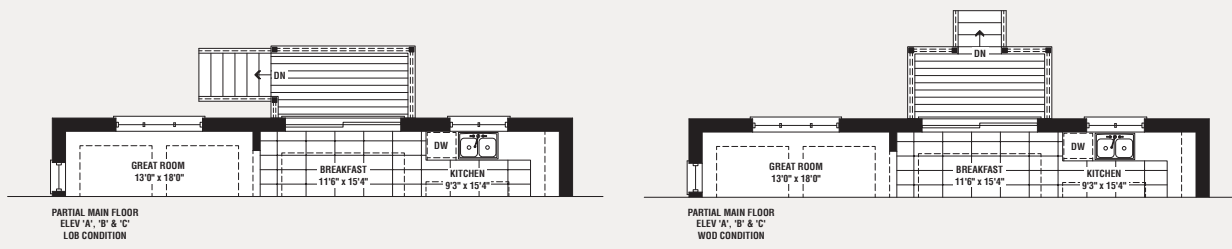
THE ANCHOR | Elev. A 2,808 sq. ft. | Elev. B 2,798 sq. ft. | Elev. C 2,804 sq. ft.





The Anchor

Elev. A 2,808 sq. ft. | Elev. B 2,798 sq. ft. | Elev. C 2,804 sq. ft.
(Includes 67 sq. ft. of Finished Basement Landing)



The Coral



Elev. B 3,156 sq. ft.



Elev. C 3,153 sq. ft.

The Coral

Elev. A 3,156 sq. ft. | Elev. B 3,156 sq. ft. | Elev. C 3,153 sq. ft.
(Includes 91 sq. ft. of Finished Basement Landing)

44'



THE CORAL | Elev. A 3,156 sq. ft. | Elev. B 3,156 sq. ft. | Elev. C 3,153 sq. ft.



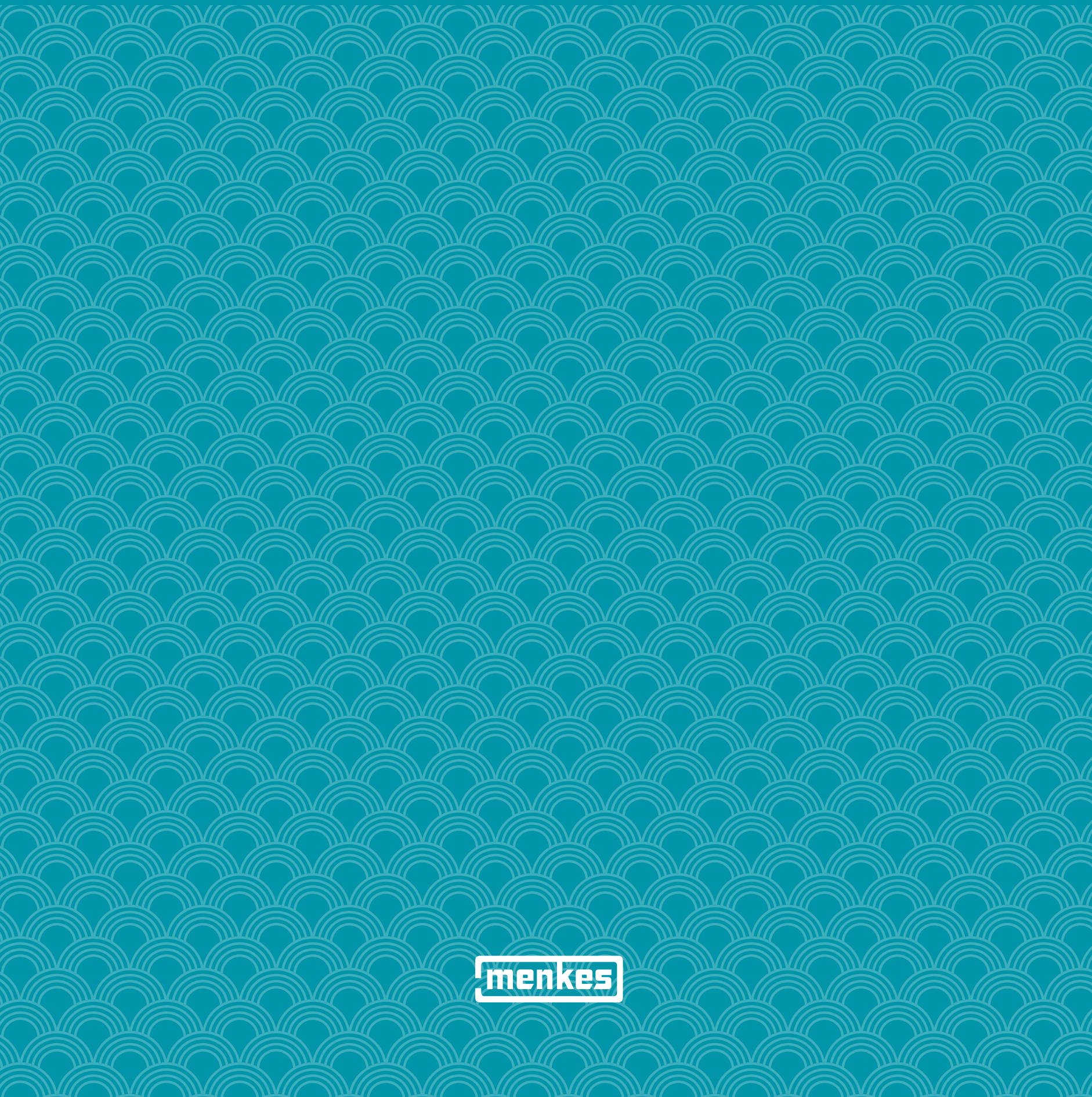
The Harbour



Elev. B 3,202 sq. ft.



Elev. C 3,203 sq. ft.



The Harbour

50'

Elev. A 3,208 sq. ft. | Elev. B 3,202 sq. ft. | Elev. C 3,203 sq. ft.
(Includes 87 sq. ft. of Finished Basement Landing)



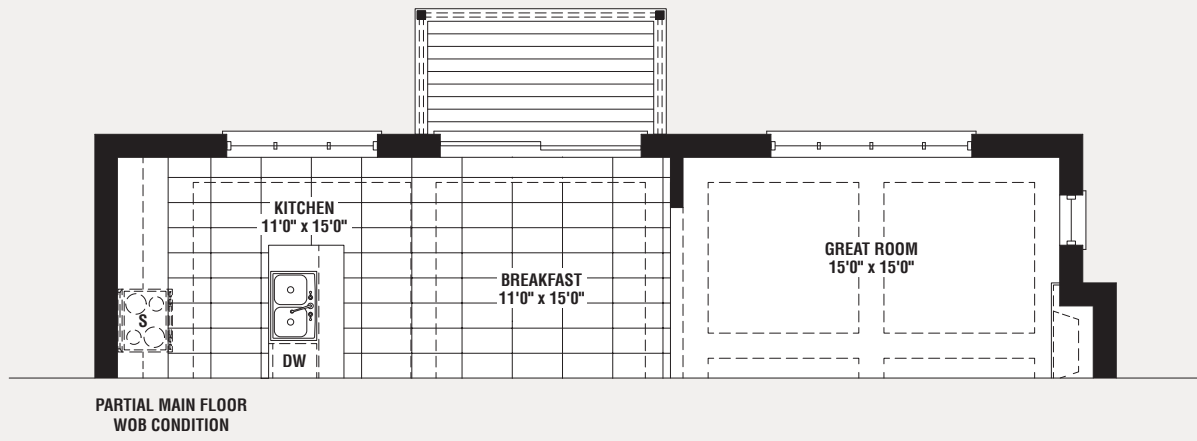
THE HARBOUR | Elev. A 3,208 sq. ft. | Elev. B 3,202 sq. ft. | Elev. C 3,203 sq. ft.



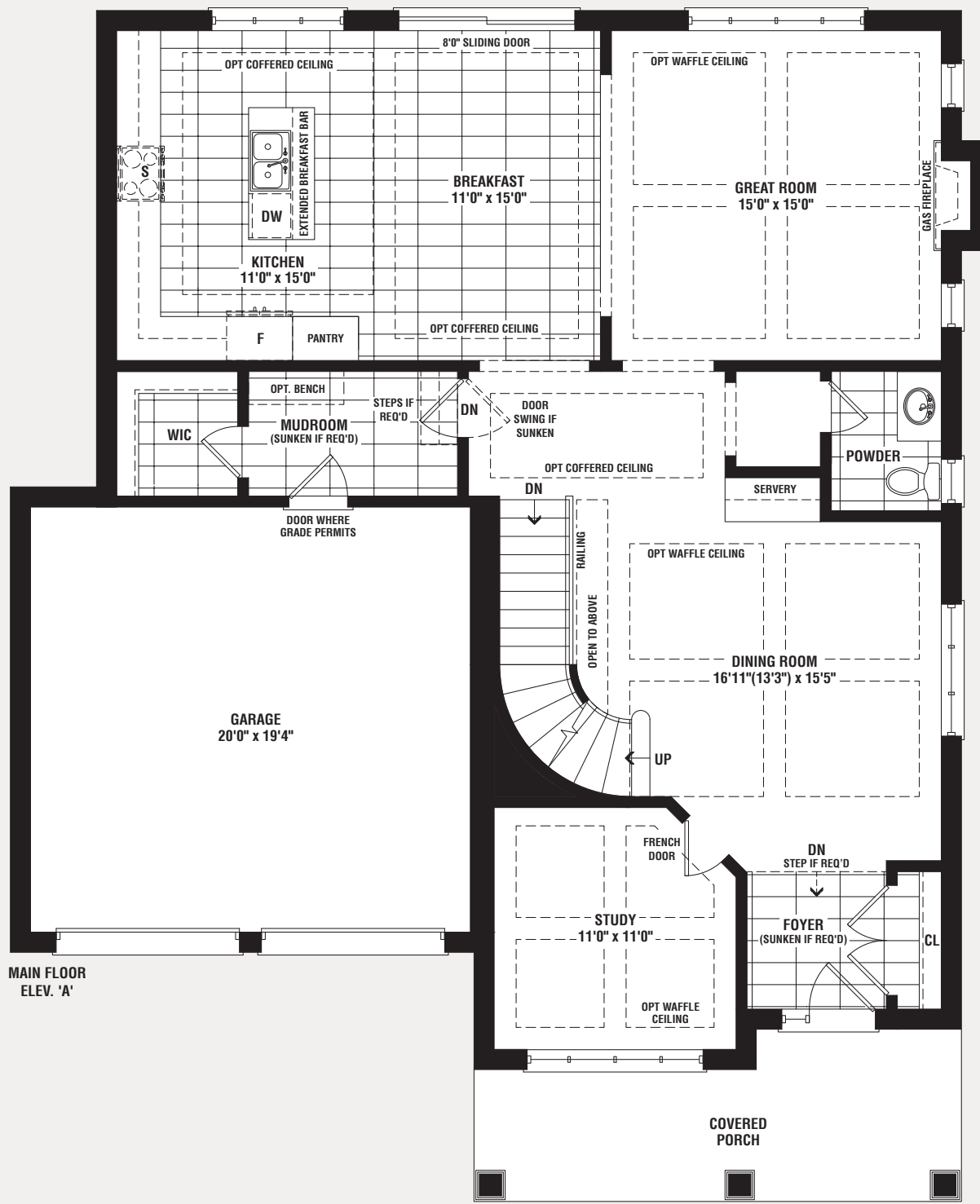


The Harbour

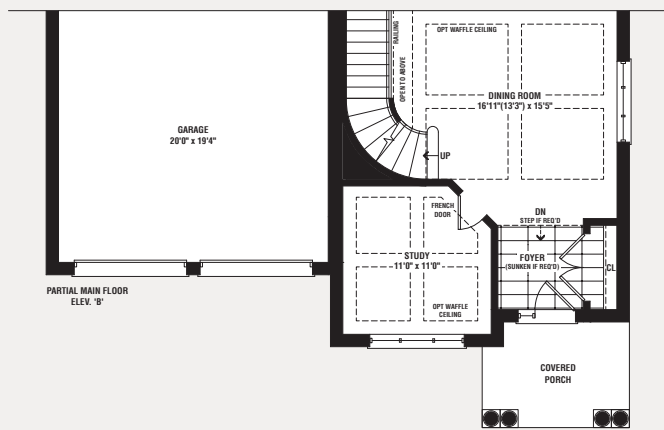
Elev. A 3,208 sq. ft. | Elev. B 3,202 sq. ft. | Elev. C 3,203 sq. ft.
(Includes 87 sq. ft. of Finished Basement Landing)



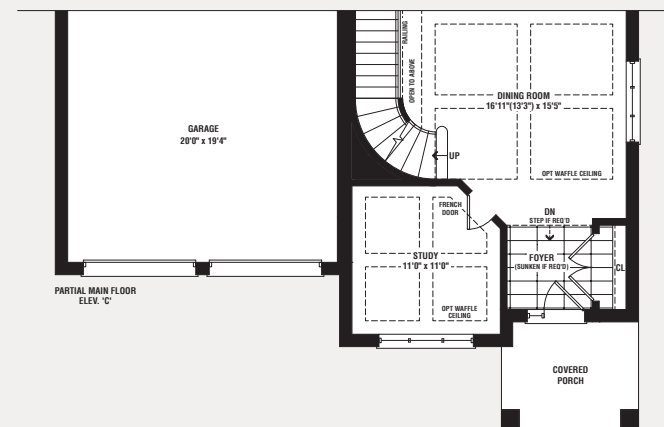
PARTIAL MAIN FLOOR
WOB CONDITION



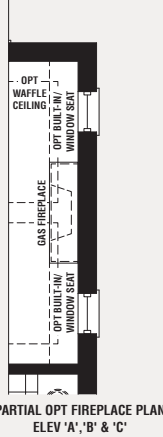
MAIN FLOOR
ELEV. 'A'



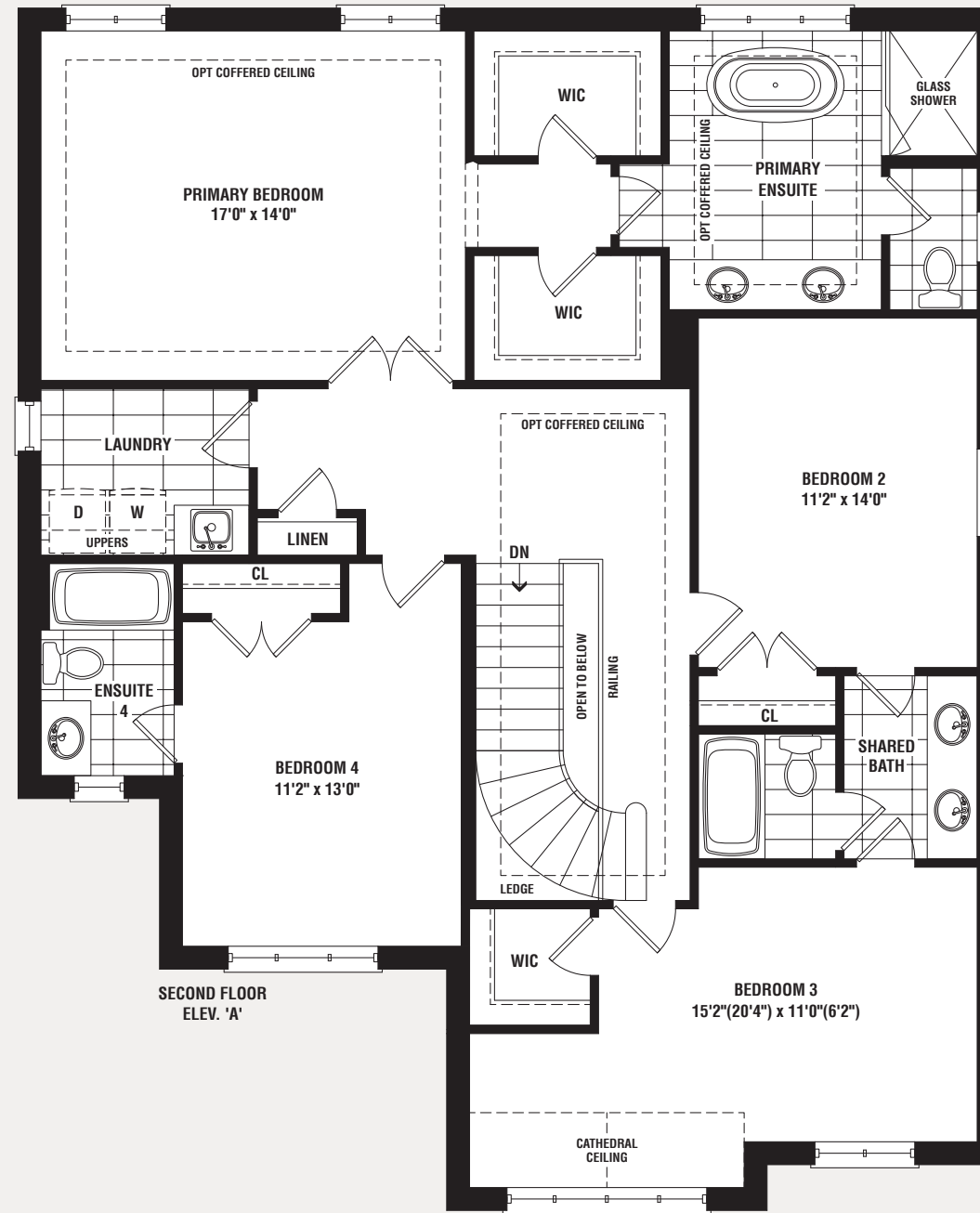
PARTIAL MAIN FLOOR
ELEV. 'B'



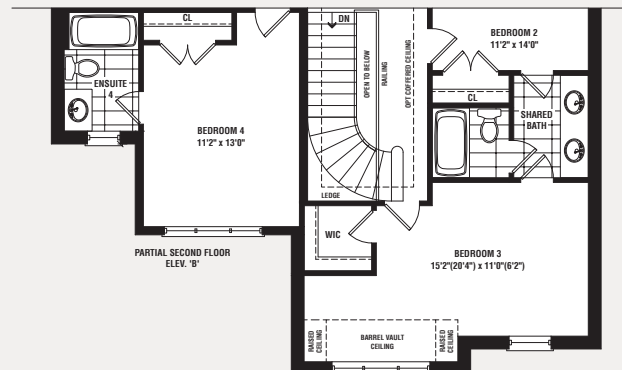
PARTIAL MAIN FLOOR
ELEV. 'C'



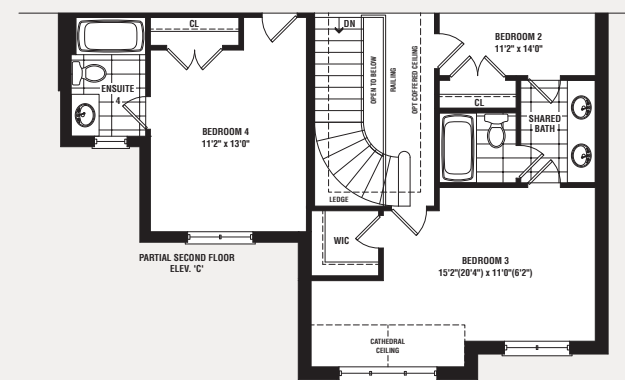
PARTIAL OPT FIREPLACE PLAN
ELEV. 'A', 'B' & 'C'



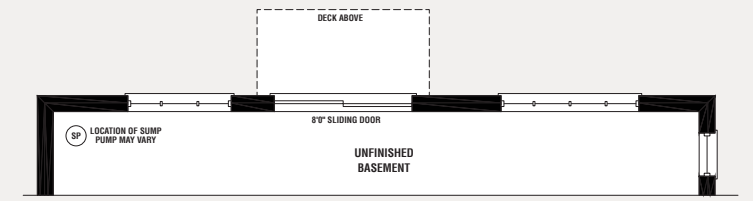
SECOND FLOOR
ELEV. 'A'



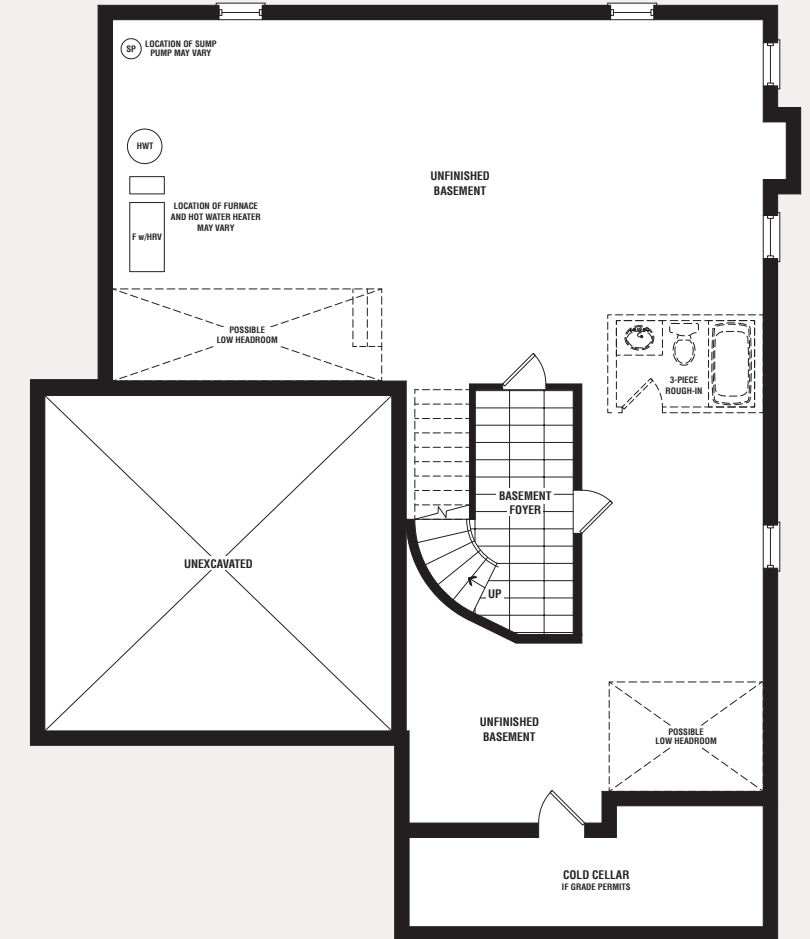
PARTIAL SECOND FLOOR
ELEV. 'B'



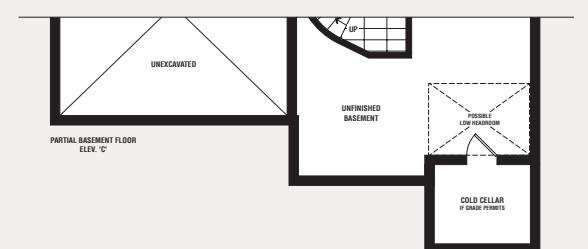
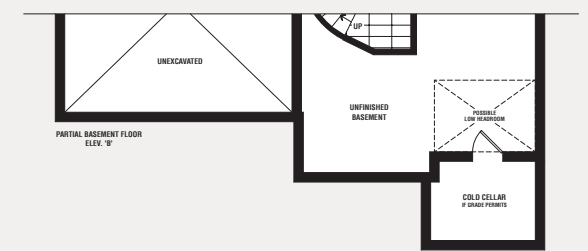
PARTIAL SECOND FLOOR
ELEV. 'C'



PARTIAL BASEMENT FLOOR
ELEV. 'A', 'B' & 'C'
WOB CONDITION



PARTIAL BASEMENT FLOOR FOR OPT FIREPLACE PLAN
ELEV. 'A', 'B' & 'C'



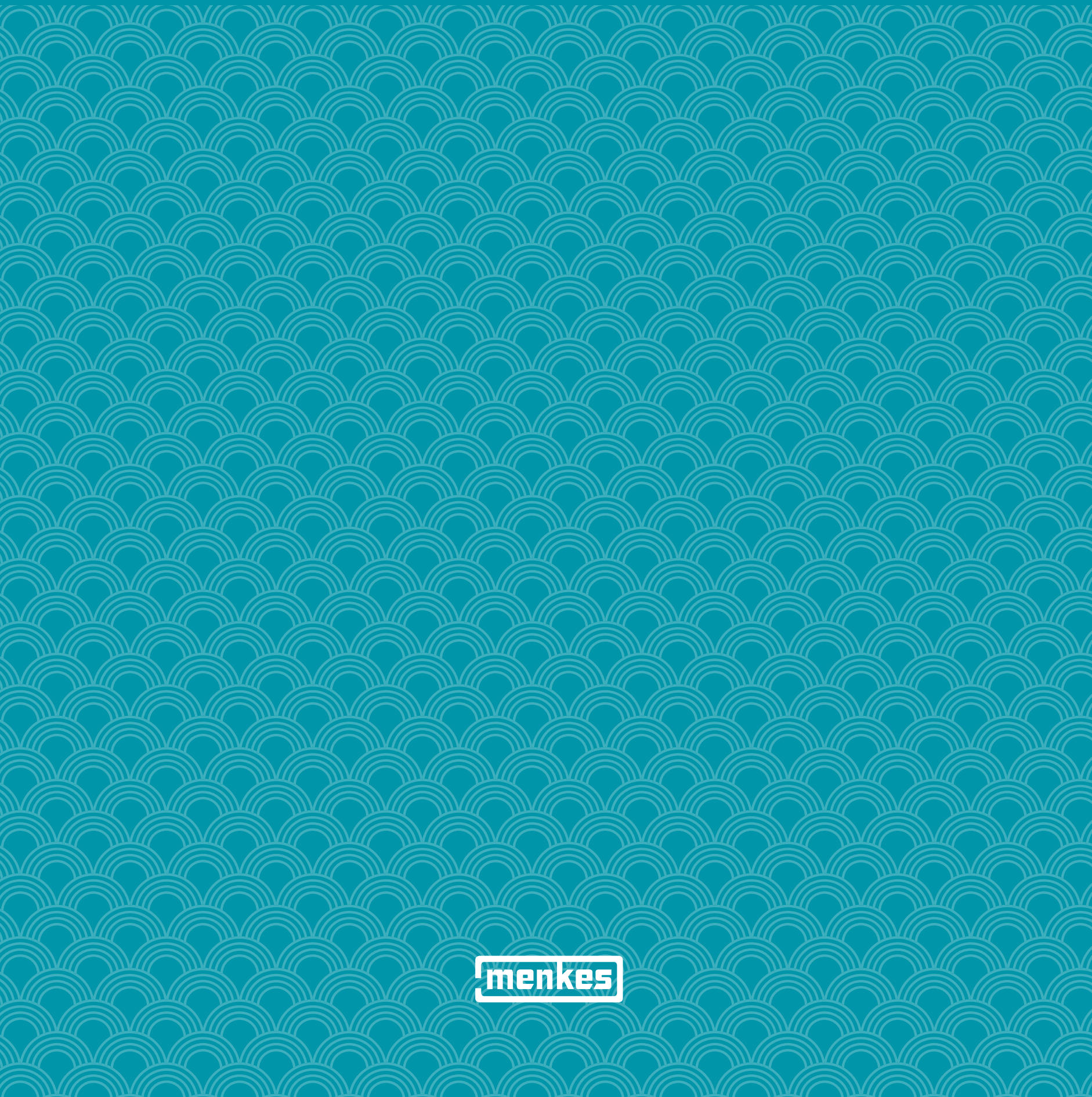
The Lakeside



Elev. B 3,360 sq. ft.



Elev. C 3,352 sq. ft.



The Lakeside

50'

Elev. A 3,356 sq. ft. | Elev. B 3,360 sq. ft. | Elev. C 3,352 sq. ft.
(Includes 52 sq. ft. of Finished Basement Landing)



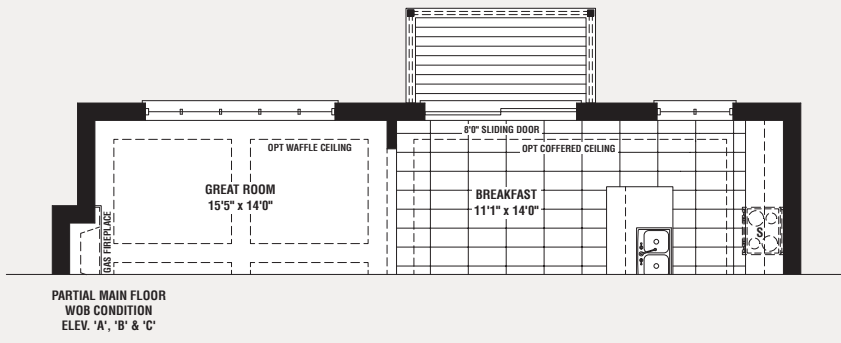
THE LAKESIDE | Elev. A 3,356 sq. ft. | Elev. B 3,360 sq. ft. | Elev. C 3,352 sq. ft.





The Lakeside

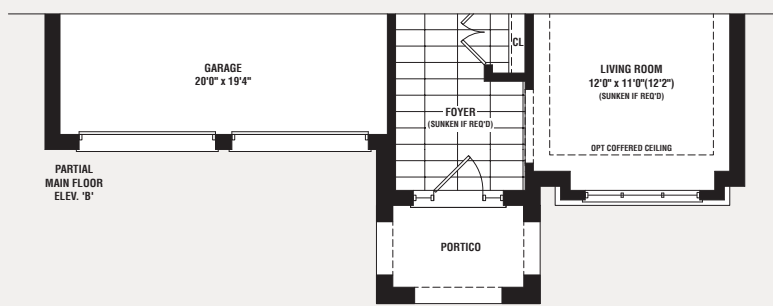
Elev. A 3,356 sq. ft. | Elev. B 3,360 sq. ft. | Elev. C 3,352 sq. ft.
(Includes 52 sq. ft. of Finished Basement Landing)



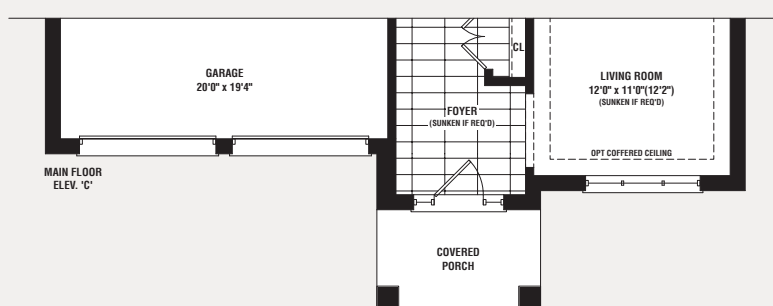
PARTIAL MAIN FLOOR
WOOD CONDITION
ELEV. 'A', 'B' & 'C'



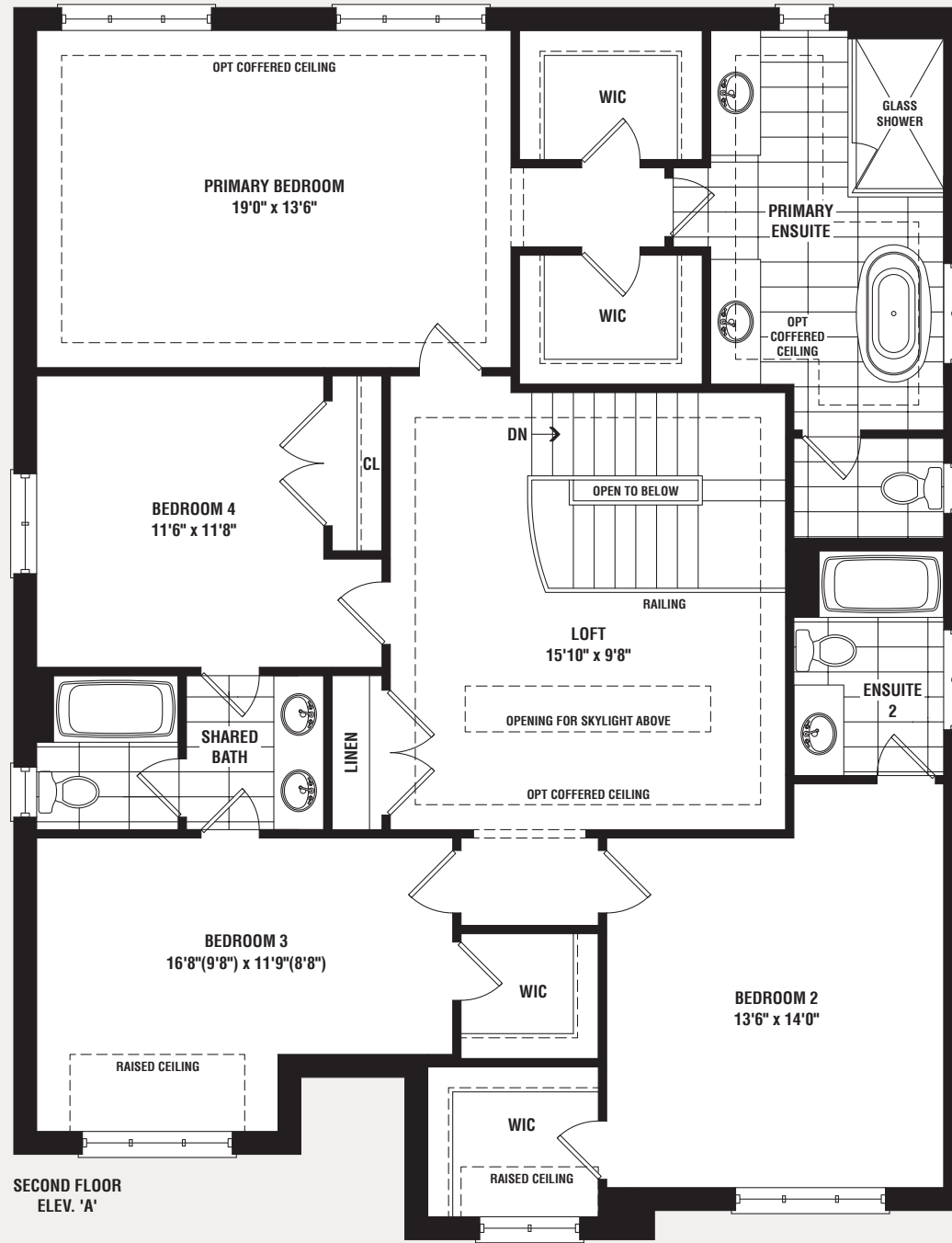
MAIN FLOOR
ELEV. 'A'



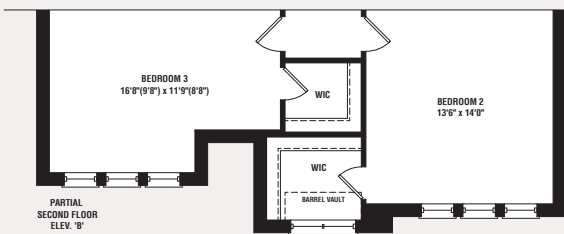
PARTIAL MAIN FLOOR
ELEV. 'B'



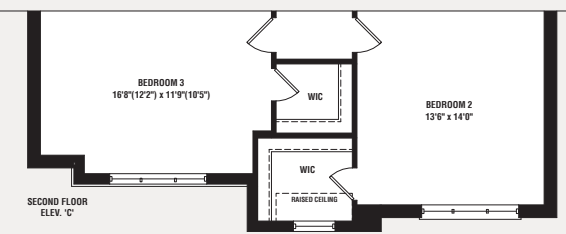
MAIN FLOOR
ELEV. 'C'



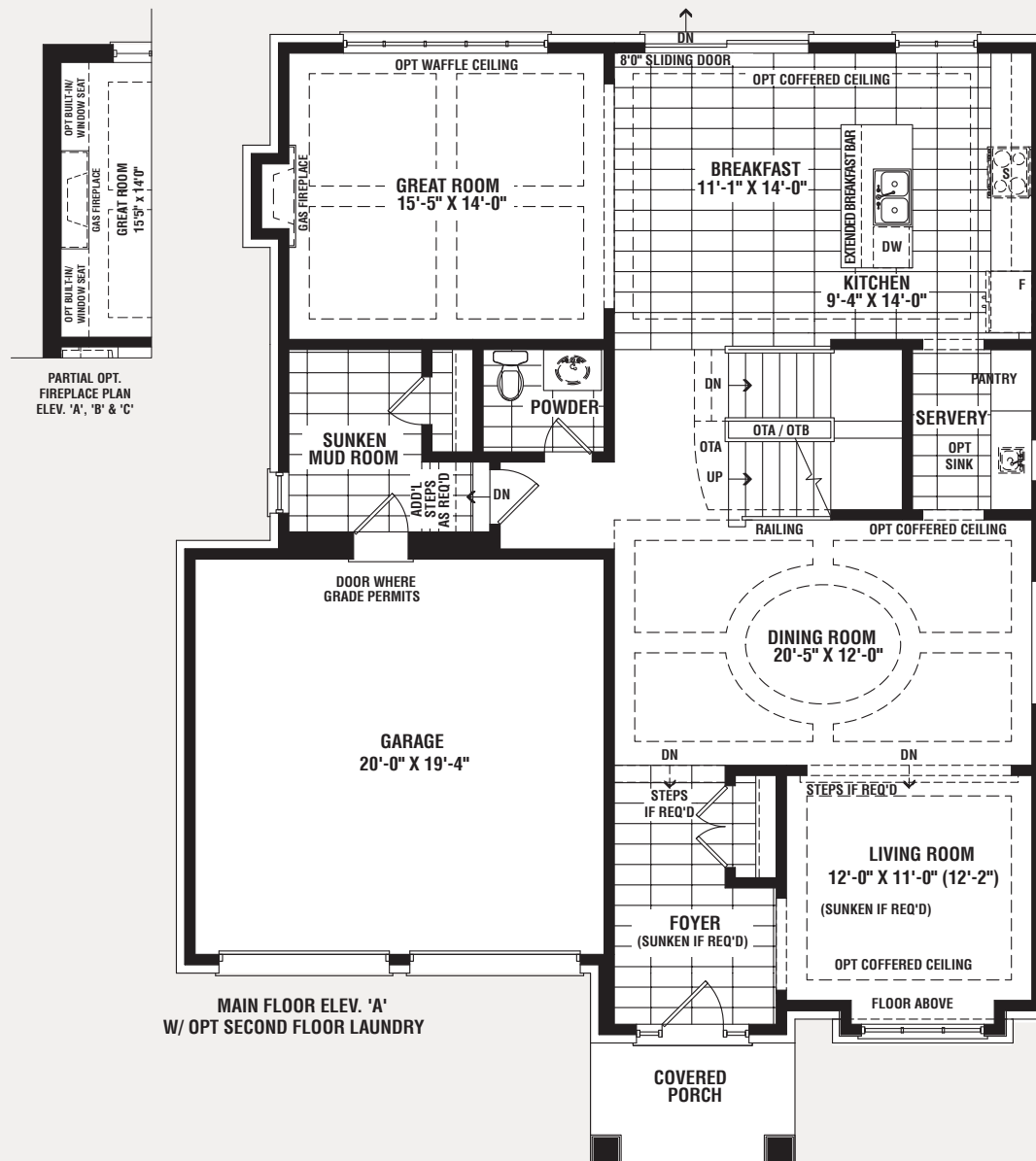
SECOND FLOOR
ELEV. 'A'



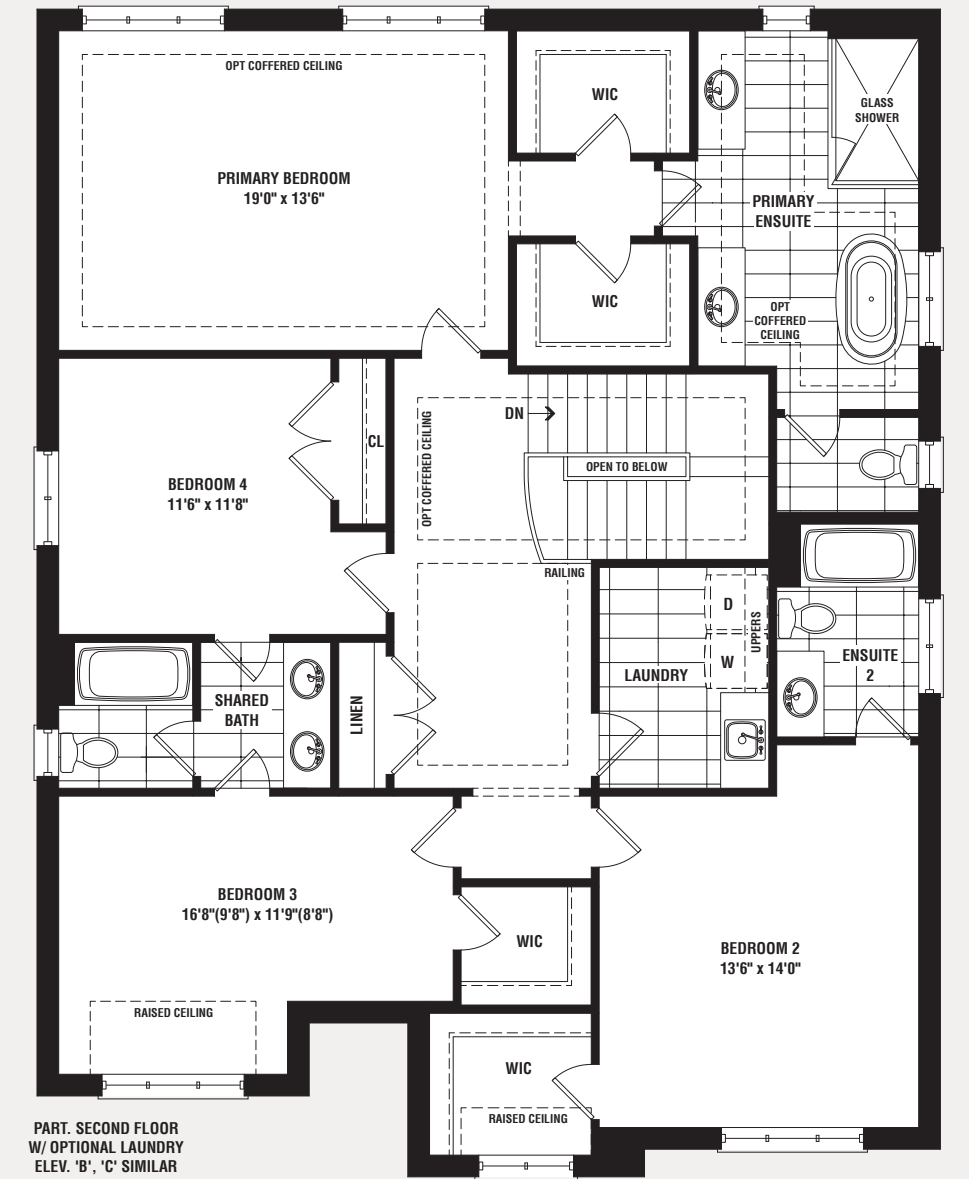
PARTIAL SECOND FLOOR
ELEV. 'B'



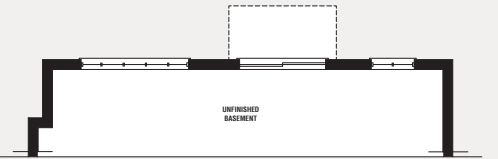
SECOND FLOOR
ELEV. 'C'



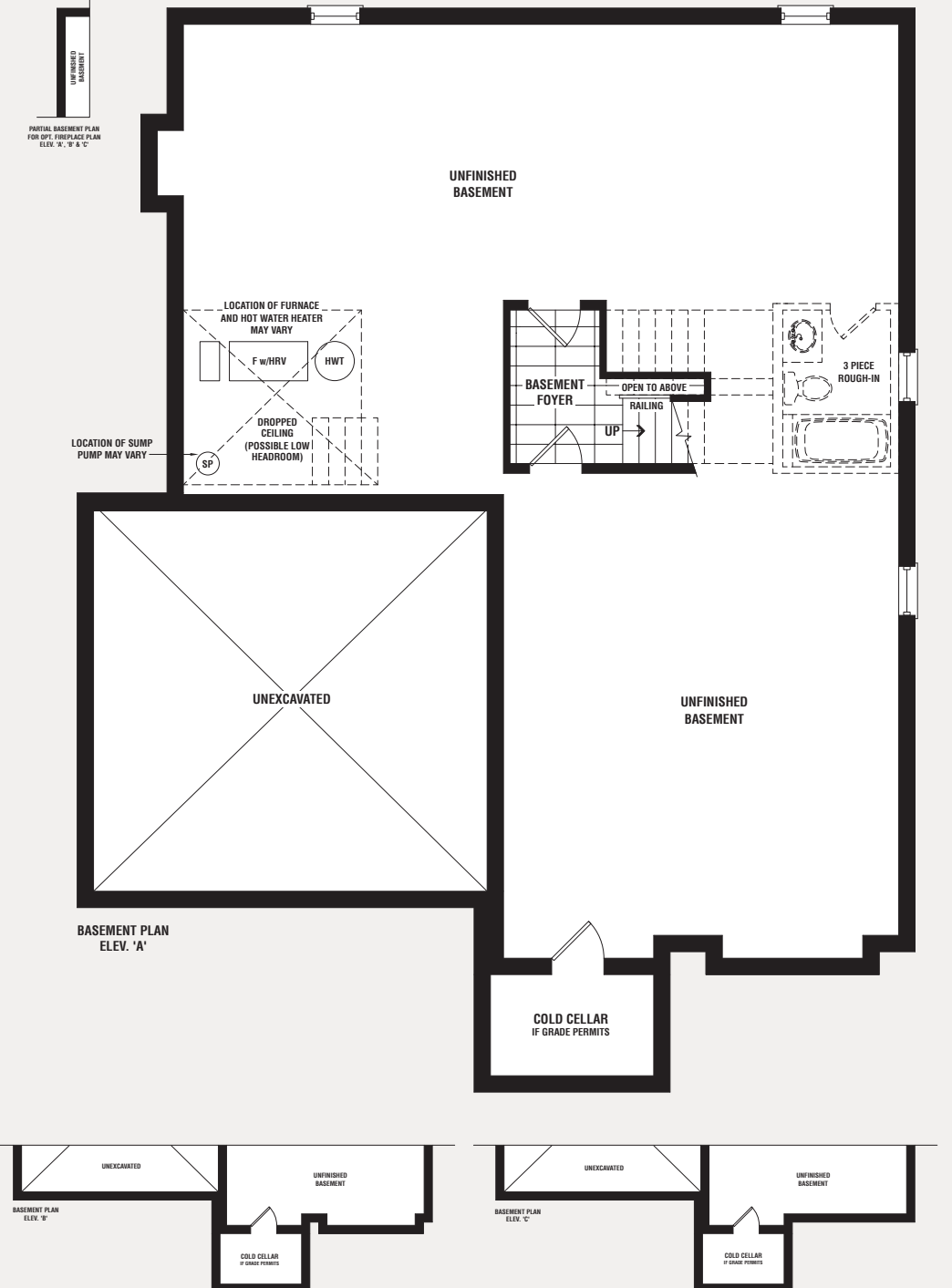
MAIN FLOOR ELEV. 'A'
W/OPT SECOND FLOOR LAUNDRY



PART. SECOND FLOOR
W/OPTIONAL LAUNDRY
ELEV. 'B', 'C' SIMILAR



PARTIAL BASEMENT PLAN
WOOD CONDITION
ELEV. 'A', 'B' & 'C'



BASEMENT PLAN
ELEV. 'A'

BASEMENT PLAN
ELEV. 'B'

BASEMENT PLAN
ELEV. 'C'

The Nautical



Elev. B 3,557 sq. ft.



Elev. C 3,557 sq. ft.

The Nautical

54'

Elev. A 3,576 sq. ft. | Elev. B 3,557 sq. ft. | Elev. C 3,557 sq. ft.
(Includes 216 sq. ft. of Finished Basement Landing)



THE NAUTICAL | Elev. A 3,576 sq. ft. | Elev. B 3,557 sq. ft. | Elev. C 3,557 sq. ft.





The Nautical

Elev. A 3,576 sq. ft. | Elev. B 3,557 sq. ft. | Elev. C 3,557 sq. ft.
(Includes 216 sq. ft. of Finished Basement Landing)

